



**Built to Last**  
Using Texas Instruments DLP technology with BrilliantColor™ features, Vivitek image quality will not suffer over time. Vivitek projectors are built either filter-free, or with long filter cleaning intervals for heavy duty projectors, reducing or eliminating the cost of regular maintenance.

**LED**  
Light Emitting Diode. A light generating technology that uses a semiconductor diode that emits monochromatic (single color) light when charged. LEDs are used in remote.

**BrilliantColor™**  
With TI's BrilliantColor technology, Vivitek's projectors produce vibrant images on the screen. It not only improves colour accuracy, but brightens secondary colours as well, for accurate, true-to-life images.

**7 Color Adjustment**  
Color Correction tab functionality enables the adjustment of colour hues in an image to remove unwanted effects, improve colour characteristics or add more of a particular colour.

**HDMI**  
HDMI (High Definition Multimedia Interface) is an uncompressed, all-digital audio/video interface that supports audio/video sources such as a set-top box, DVD player, A/V receiver, and video monitors such as a digital projector or digital television (DTV). HDMI is backward compatible with DVI specification and supports HDCP.

**MHL**  
Connect your MHL mobile devices and home theater products to a broad range of our projectors.

**High Definition**  
HD720p:  
High Definition Resolution of 720 lines (1280x720) or (1280x800)  
FullHD 1080p:  
Full High Definition Resolution of 1080 lines (1920x1080)

**3D Technology Ready**  
Featuring DLP® 3D-ready and DLP Link technologies the 3D ready projector enables the viewing of 3D content when wearing 3D glasses. Perfect for gaming, movies and education.

**Filter Free**  
Incorporates Texas Instruments' latest DLP technology that is designed to be superior in fighting against dust build-up, a sealed optical engine, which is filter free and more durable in comparison with plastic components.

**Instant On/Off**  
The projects are designed for quick start-up and shut down times.

**Audio Ready**  
The integrated audio speakers do not require a separate sound system. The audio quality is powerful, crisp and clear.

**Interactivity**  
Interactive projectors allow active participation of the users with the projected content, either through the use of an electronic pen or finger touch. The interactive projector basically creates an electronic whiteboard surface on any background.

**Interactive Pen**  
The projector supports two interactive pens which can be used for note-taking, highlighting and making on screen corrections

**Long Life Lamp**  
With up to 10,000 hours of lamp life, the long life lamps save time and money on the projector's maintenance. The lamp lifespan has been greatly improved, so there is no more need for constant lamp and filter replacement.

**Free Wall Mount Bracket**  
Wall mount bracket free of charge upon request for: D755WT, D755WTIR, D756USTI, DH75758UST, DH759USTI

**Interchangeable lenses**  
Lenses are available with different optical specification to meet a variety of projection needs.

**24/7 Operation**  
Designed and manufactured for heavy duty applications and capable of 24/7 operation.

**Lens Shift**  
Vertical and horizontal lens shift adjustments allow for easier alignment on the screen without moving the projector and provides professional installers with greater flexibility.

**Centred Lens Design**  
A centred lens design eliminates the need for any special planning and installation considerations.

**Dual-Lamp**  
To create a brighter image, dual lamp switching technology is used in a selection of Vivitek projectors. For added benefit, the projector will automatically switch to single operation mode in case one lamp is down.

**Network Management**  
Network ready for integration and system administration via the RJ45 interface. This allows the network administrator to monitor the status of the projectors installed on the network and remotely access the projector's functions and settings.

**HDBaseT**  
HDBaseT protocol allows for HD video quality and digital audio content to be transmitted over standard Ethernet cable up to 100m away from the source.

**3G-SDI**  
3G-SDI is the 3rd generation serial digital interface of transmitting uncompressed, unencrypted High Definition digital video signals up to 300 meter in a professional video environment.

**Lens Positioning Memory (LPM)**  
The Lens Positioning Memory (LPM) feature allows for storing up to 10 user defined lens positions for focus, zoom and lens shift.

**Edge Blending**  
A selection of Vivitek's projectors feature built-in edge blending. The projector images can be seamlessly combined into one large and stunning image. With internal edge blending, there is no need for an edge blending box or camera. All setup is conducted via the projector's OSD and remote control.

**Image Warping**  
Warping functionality allows for projection on non-flat surfaces such as curved screens or columns without external hardware or software to control the geometrical shape of the image.

**VividMotion**  
With VividMotion projector produces a fluid and flawless video streaming.

**Education**  
Projector belongs to the education product portfolio and is backed with the 5 year education warranty program.

## Warranty

### Entry

2 Yr Warranty on Projector, 1 Yr or 1,000 hrs on Lamp

### Standard

3 Yr Warranty on Projector, 1 Yr or 1,000 hrs on Lamp

### Education

5 Yr Warranty on Projector, 3 Yr or 2,000 hrs on Lamp

### Large Venue

5 Yr Warranty on Projector, 3 Yr or 1,000 hrs on Lamp

### Large Venue Laser Phosphor

5-Yr warranty on projector, 3-yr or 10,000h on the Laser Phosphor illumination source

# Visual Display and Presentation

Products from Vivitek



Take a look at our **newest products** for **business, education, large venue** and **home cinema**.

Vivitek, a brand of Delta, brings **smart and energy-efficient solutions to offices** and homes, to improve your experience of sharing content on the big screen.

We want you to enjoy our projectors on many levels, so we take great care in details: giving our products **modern design, implementing new technological solutions** and **user friendly navigation**.

# Pocket & Personal Projectors

Share presentations  
anytime, anyplace, anyhow

Resolution: HD720p / WXGA

High brightness up to 1000 ANSI Lumens

Contrast ratio up to 30,000:1

30,000 hours LED light source



## The Qumi series of projectors delivers:

- **Great portability:** The sleek design and compact size make Qumi projectors the perfect portable companion for business and personal use.
- **Easy connectivity:** the Qumi series can almost instantly connect to any device and project an image of up to 107" diagonal.
- **Effortless sharing:** The Qumi Q6 is equipped with Wi-Fi connection that enables content sharing from Android™, iOS, Mac and Windows devices.
- **Freedom to use the Qumi without a computer:** the Qumi projectors have an **embedded media and document viewer** for PC – less playback of documents, photos, videos and audio files (excluding Qumi Q4).



# Pocket & Personal Projectors specification



**Qumi Q6**



**Qumi Q5**



**Qumi Q4**



**Qumi Q7 Plus**

<b>Brightness</b>	800 ANSI Lumens	500 ANSI Lumens	500 ANSI Lumens	1000 ANSI Lumens
<b>Native Resolution</b>	WXGA (1280 x 800) HD720p	WXGA (1280 x 800) HD720p	WXGA (1280 x 800) HD720p	WXGA (1280 x 800)
<b>Max. Resolution</b>	UXGA (1600 x 1200) @60Hz	UXGA (1600 x 1200) @60Hz	UXGA (1600 x 1200) @60Hz	UXGA (1600 x 1200) @60Hz
<b>Contrast Ratio</b>	30,000:1	30,000:1	30,000:1	30,000:1
<b>Lamp Life and Type</b>	30,000 Hours LED	30,000 Hours LED	30,000 hours, LED	30,000 hours, LED
<b>Display Type</b>	Single chip DLP® Technology by Texas Instruments	Single chip DLP® Technology by Texas Instruments	Single chip DLP® Technology by Texas Instruments	Single chip DLP® Technology by Texas Instruments
<b>Throw Ratio</b>	1.55:1	1.55:1	1.55:1	1.30-1.43:1
<b>Image Size (Diagonal)</b>	30" - 90"	30" - 90"	30" - 90"	26" - 107"
<b>Projection Distance</b>	1 - 3m	1 - 3 m	1 - 3 m	0.8 - 3m
<b>Projection Lens</b>	F/1.9, f=15.3	F/1.9, f=15.3	F/1.9, f=15.3	F/1.55 (TBC the focal length)
<b>Zoom Ratio</b>	Fixed Lens	Fixed Lens	Fixed Lens	1.1x
<b>Native Aspect Ratio</b>	16:10	16:10	16:10	16:10
<b>Offset</b>	105%	105%	105%	105%
<b>Keystone Correction</b>	Vertical + 33° / - 45°	Vertical +/- 40°	NA	Vertical -35° / +32°
<b>Automatic Keystone Correction</b>	No	No	No	No
<b>Speakers</b>	2W x 1	2W x 1	NA	2W x 2
<b>Video Compatibility</b>	SDTV/EDTV/HDTV(480i/p, 720p, 1080i/p), NTSC 4.43, PAL(B/G/H/I/M/N/60), SECAM(B, D, G, K, K1, L)	SDTV(480i, 576i), EDTV (480p, 576p), HDTV (720p, 1080i/p), NTSC (M, 3.58/4.43 MHz), PAL (B, D, G, H, I, M, N), SECAM (B, D, G, K, K1, L)	SDTV(480i, 576i), EDTV (480p, 576p), HDTV (720p, 1080i/p), NTSC (M, 3.58/4.43 MHz), PAL (B, D, G, H, I, M, N), SECAM (B, D, G, K, K1, L)	SDTV(480i, 576i), EDTV (480p, 576p), HDTV (720p, 1080i/p), NTSC (M, 3.58/4.43 MHz), PAL (B, D, G, H, I, M, N), SECAM (B, D, G, K, K1, L)
<b>I/O Connection Ports</b>	HDMIx2 ((HDMI/MHL x1, HDMI x1)), Audio-Out (Mini-Jack), USB type A for multimedia and document viewer	VGA adaptor - 24pin Universal input, HDMI (HDMI/MHL x1), Composite Video, Audio-In (Mini-Jack), Audio-Out (Mini-Jack), USB type A for multimedia and document viewer	VGA adaptor - 24pin Universal input, HDMI (HDMI/MHL x1), Composite Video, Audio-In (Mini-Jack), Audio-Out (Mini-Jack), USB Type-A (5V) 1x	VGA-In (15pin D-Sub) (x1), HDMI (2x (1x MHL)), Composite Video, Audio-In (RCA), Audio-Out (Mini-Jack), USB type A for multimedia and document viewer
<b>Dimensions (W x D x H)</b>	165 x102.4 x 34mm	160x102.4x32.3 mm	160 x102.4 x 32.3mm	238 x 180 x 40 mm
<b>Weight</b>	475 g	490 g	460 g	1.4 kg
<b>Noise Level</b>	34dB / 30dB (Normal/ ECO)	36dB / 28dB (Normal/ ECO)	36dB / 28dB (Normal/ ECO)	39dB / 33dB (Normal/ ECO)
<b>Power</b>	Supply: AC 100-240V, 50/60Hz Consumption: 66W/ 52W (Normal/ Eco), <0.5W (Standby Mode)	Supply: AC 100-240V, 50/60Hz Consumption: 65W (Boost Mode), <0.5W (Standby Mode)	Supply: AC 100-240V, 50/60Hz Consumption: 65W (Boost Mode), <0.5W (Standby Mode)	Supply: AC 100-240V, 50/60Hz Consumption: 110W/85W (Normal/Eco Mode), <0.5W (Standby Mode)
<b>3D compatibility</b>	Yes	Yes	Yes	Yes
<b>Wireless</b>	Yes (integrated)	Yes (using Wi-Fi dongle)	No	Yes (using Wi-Fi dongle)
<b>WiFi remote control app</b>	No	Yes	No	Yes
<b>File formats supported</b>	Document: Microsoft® Office (Word, Excel®, PowerPoint® w/o animation); PDF, TXT Images: JPEG, BMP Video: AVI, MKV, TS, DAT, VOB, MPG, MPEG, MOV, MP4, WMV Audio: MP1/MP2/MP3, WAV, WMA, OGG, ADPCM-WAV, PCM-WAV	Document: Microsoft® Office (Word, Excel®, PowerPoint® w/o animation); PDF, TXT Images: JPEG, PNG, BMP Video: MPEG-4, H.264, Divx™, WMV Audio: MP1/MP2/MP3, WAV, WMA, OGG, ADPCM-WAV, PCM-WAV		Audio: MP1/MP2/MP3, WAV, WMA, OGG, ADPCM-WAV, PCM-WAV
<b>Standard Accessories</b>	HDMI Cable, MHL Cable, AC Power Cord, AC Adapter, Carrying Case, Remote Controller (with battery), User Manual (CD), Quick Start Guide, Warranty Card	VGA Cable, HDMI Cable, AV 3.5mm Jack Cable, User Manual (CD), Carrying Case, Quick Start Guide, Warranty Card (by region), Remote Controller (with battery), AC Power Cord	VGA Cable, Quick Start Guide, Warranty Card (by region), Remote Controller (with battery), AC Power Cord	VGA Cable, HDMI Cable, HDMI-MHL Cable, User Manual (CD), Lens Cap, Carrying Case, Quick Start Guide, Warranty Card (by region), Remote Controller (with battery), AC Power Cord
<b>Optional Accessories</b>	Remote Control, External Travel Battery	Remote Control, External Travel Battery, WiFi USB Dongle	Remote Control	Remote Control, External Travel Battery, WiFi USB Dongle
<b>Available Colours</b>	Black, White, Light Blue, Red, Orange, Gold, Charcoal Gray	Black, White, Red	White	Black
<b>Warranty</b>	3 Years Warranty/5 Years Education	3 Years Warranty/5 Years Education	2 Years Warranty	3 Years Warranty

# Portable Projectors

Power and performance  
in a compact package

Full range of resolutions  
up to 1080p

High brightness of up  
to 3200 ANSI Lumens

Contrast ratio of up to  
15,000:1

Lamp life up to 10,000  
hours



*For whom has the series of portable projectors been designed?*

- The portable series is the best choice **for small and medium enterprises**: it is designed for a **rapid set up** for businesses on-the-go, thanks to its **compact size** and a weight of just **1.9 kg**.
- The product line offers a choice in resolution, with a **high contrast ratio** ensuring perfect image sharpness.
- **We also know how important the return on investment is for you.** That is why we have designed the portable series to provide you with **long lasting lamp life of up to 10,000 hours**, to reduce the total costs of ownership.



# Portable Projectors specification



**DS234**

**DX255**

**D555WH**

**D557WH**

**DH558**

**DX563ST**

<b>Display Type</b>	Single 0.55" DLP® Technology by Texas Instruments	Single 0.55" DLP® Technology by Texas Instruments	Single 0.55" DLP® Technology by Texas Instruments	Single 0.65" DLP® Technology by Texas Instruments	Single 0.65" DLP® Technology by Texas Instruments	Single 0.55" DLP® Technology by Texas Instruments
<b>Brightness</b>	3200 ANSI Lumens	3200 ANSI Lumens	3000 ANSI Lumens	3000 ANSI Lumens	3000 ANSI Lumens	3000 ANSI Lumens
<b>Native Resolution</b>	SVGA (800 x 600)	XGA (1024 x 768)	XGA (1024 x 768)	WXGA (1280 x 800)	1080p (1920 x1080)	XGA (1024 x 768)
<b>Supported Max. Resolution</b>	1080p (1920 x 1080) @60Hz	1080p (1920 x 1080) @60Hz	WUXGA (1920 x1200) @60Hz	WUXGA (1920 x 1200) @60Hz	WUXGA (1920 x1200) @60Hz	WUXGA (1600 x 1200) @60Hz
<b>Native Aspect Ratio</b>	4:3	4:3	4:3	16:10	16:9	4:3
<b>Contrast Ratio</b>	10,000:1	10,000:1	15,000:1	15,000:1	15,000:1	15,000:1
<b>Keystone Correction</b>	Vertical +/-40°	Vertical +/-40°	Vertical +/-40°	Vertical +/-40°	Vertical +/-40°	Vertical +/-40°
<b>Projection Lens</b>	F = 2.51 - 2.69, f = 21.95 - 24.18 mm	F = 2.51 - 2.69, f = 21.95 - 24.18 mm	F = 2.52 - 2.73, f = 21.8 - 24 mm	F = 2.52 - 2.73, f = 21.8 - 24 mm	F = 2.52 - 2.73, f = 17.81 - 27.35 mm	F = 2.87, f = 7.28 mm
<b>Zoom Ratio</b>	1.1x	1.1x	1.1x	1.1x	1.2x	1x
<b>Throw Ratio</b>	1.97 - 2.17 : 1	1.97 - 2.17 : 1	1.92 - 2.14 : 1	1.54 - 1.71 : 1	1.22 - 1.46 : 1	0.656:1
<b>Image Size (Diagonal)</b>	27" - 290"	27" - 290"	23" - 256"	27" - 300"	31" - 308.8"	50" - 126"
<b>Projection Distance</b>	1.2 - 11 m	1.2 - 11 m	1 - 10 m	1 - 10 m	1 - 10 m	660 - 1690 mm
<b>Offset (Based on Full Image Height)</b>	115%	115%	114%	114%	115%	114%
<b>Video Compatibility</b>	SDTV (480i, 576i), EDTV (480p, 576p), HDTV (720p, 1080i/p), NTSC (M, 3.58/4.43 MHz), PAL (B, D, G, H, I, M, N), SECAM (B, D, G, K, K1, L)	SDTV (480i, 576i), EDTV (480p, 576p), HDTV (720p, 1080i/p), NTSC (M, 3.58/4.43 MHz), PAL (B, D, G, H, I, M, N), SECAM (B, D, G, K, K1, L)	SDTV (480i, 576i), EDTV (480p, 576p), HDTV (720p, 1080i/p), NTSC (M, 3.58/4.43 MHz), PAL (B, D, G, H, I, M, N), SECAM (B, D, G, K, K1, L)	SDTV (480i, 576i), EDTV (480p, 576p), HDTV (720p, 1080i/p), NTSC (M, 3.58/4.43 MHz), PAL (B, D, G, H, I, M, N), SECAM (B, D, G, K, K1, L)	SDTV (480i, 576i), EDTV (480p, 576p), HDTV (720p, 1080i/p), NTSC (M, 3.58/4.43 MHz), PAL (B, D, G, H, I, M, N), SECAM (B, D, G, K, K1, L)	SDTV (480i, 576i) / EDTV (480p, 576p) / HDTV (720p, 1080i, 1080p), NTSC (M, 3.58/4.43 MHz), PAL (B,D,G,H,I,M,N) SECAM (B,D,G,K,K1,L)
<b>I/O Connection Ports</b>	VGA-In, HDMI v1.4, Composite Video, Audio-In (Mini-Jack), Audio-Out (Mini-Jack) RS-232, USB miniB (Service)	VGA-In, HDMI v1.4, Composite Video, Audio-In (Mini-Jack), Audio-Out (Mini-Jack) RS-232, USB miniB (Service)	VGA-In (x2), HDMI v1.4 (HDMI/MHL x1), S-Video, Composite Video, Audio-In (Mini-Jack), VGA-Out (15pin D-Sub), Audio-Out (Mini-Jack), RS-232, USB miniB (Service)	VGA-In (x2), HDMI v1.4 (HDMI/MHLx1), S-Video, Composite Video, Audio-In (Mini-Jack), VGA-Out (15pin D-Sub), Audio-Out (Mini-Jack), RS-232, USB miniB (Service)	VGA-In , HDMI v1.4 (HDMI/MHLx1), Audio-In (Mini-Jack), VGA-Out (15pin D-Sub), RS-232, USB A (Power Only) USB miniB (Service)	VGA-In (x2), HDMI v1.4 (HDMI/MHLx1), S-Video, Composite Video, Audio-In (Mini-Jack), VGA-Out (15pin D-Sub), Audio-Out (Mini-Jack), RS-232, USB miniB (Service)
<b>Dimensions (WxDxH)</b>	285 x 193.5 x 111.5 mm	285 x 193.5 x 111.5 mm	274.6 x 212 x 100 mm	274.6 x 212 x 100 mm	274.6 x 212 x 100 mm	274.6 x 212 x 100 mm
<b>Weight</b>	1.97 kg	1.97 kg	2.3 kg	2.3 kg	2.3 kg	2,3 kg
<b>Speakers</b>	2W	2W	2W	2W	2W	2W
<b>Noise Level</b>	30dB/28dB (Normal/Eco. Mode)	30dB/28dB (Normal/Eco. Mode)	33dB/30dB (Normal/Eco. Mode)	33dB/30dB (Normal/Eco. Mode)	33dB/31dB (Normal/Eco. Mode)	35dB/31dB (Normal/Eco. Mode)
<b>Lamp Life and Type</b>	4,000/6,000/8,000 Hours (Normal/Eco./Dynamic Eco. Mode), 203W/170W	4,000/6,000/8,000 Hours (Normal/Eco./Dynamic Eco. Mode), 203W/170W	5,000/6,000/10,000 Hours (Normal/Eco./Dynamic Eco. Mode), 190W/ 160W	5,000/6,000/10,000 Hours (Normal/Eco./Dynamic Eco. Mode), 190W/ 160W	5,000/6,000/10,000 Hours (Normal/Eco./Dynamic Eco. Mode), 190W/ 160W	5,000/6,000/10,000 Hours (Normal/Eco./Dynamic Eco. Mode), 190W/160W
<b>Power</b>	Supply: AC 100-240V, 50/60Hz, Consumption: 220W (Eco. Mode), 260W (Normal Mode), <0.5W (Standby)	Supply: AC 100-240V, 50/60Hz, Consumption: 220W (Eco. Mode), 260W (Normal Mode), <0.5W (Standby)	Supply: AC 100-240V, 50/60Hz, Consumption: 200W (Eco. Mode), 240W (Normal Mode), <0.5W (Standby).	Supply: AC 100-240V, 50/60Hz, Consumption: 200W (Eco. Mode), 240W (Normal Mode), <0.5W (Standby).	Supply: AC 100-240V, 50/60Hz, Consumption: 200W (Eco. Mode), 240W (Normal Mode), <0.5W (Standby).	Supply: AC 100-240V, 50/60Hz, Consumption: 200W (Eco. Mode), 240W (Normal Mode), <0.5W (Standby)
<b>UPC</b>	813097 021885	813097 021908	814964 338044	814964 338068	813097 021083	813097 021502
<b>Warranty</b>	Entry	Entry	Entry/ Education	Entry/ Education	Entry/ Education	Entry

# Multimedia Projectors

## Feature-rich with amazing performance

Full range of resolutions up to WUXGA

High brightness up to 6000 ANSI Lumens

Contrast ratio up to 15,000:1

Lamp life up to 7,000 hours



### What is needed for a conference room?

Imagine a setting, where a presentation can be shared on the big screen. Easily, without hassle, by creating a comfortable environment for participations to discuss ideas and make decisions. The wide multimedia projector range offers a variety of features ideal for any conference room:

- **Flexible installation:** We have provided the D9 series with a **vertical lens shift**.
- **Easy integration:** The D9 series will easily integrate with any equipment thanks to a **LAN interface** and an extensive range of **connectivity options**, including one or two digital inputs, HDMI and a DisplayPort.
- Display the full content of the computer screen onto a large projection.





# Multimedia Projectors specification



**DX813**



**DW814**



**DX831**



**DW832**

<b>Display Type</b>	Single 0.55" DLP® Technology by Texas Instruments	Single 0.65" DLP® Technology by Texas Instruments	Single 0.55" DLP® Technology by Texas Instruments	Single 0.55" DLP® Technology by Texas Instruments
<b>Brightness</b>	3500 ANSI Lumens	3800 ANSI Lumens	4500 ANSI Lumens	5000 ANSI Lumens
<b>Native Resolution</b>	XGA (1024 x 768)	WXGA (1280 x 800)	XGA (1024 x 768)	WXGA (1280 x 800)
<b>Supported Max. Resolution</b>	WUXGA (1920 x 1200) @60Hz	WUXGA (1920 x 1200) @60Hz	WUXGA (1600 x 1200) @60Hz	WUXGA (1600 x 1200) @60Hz
<b>Native Aspect Ratio</b>	4:3	16:10	4:3	16:10
<b>Contrast Ratio</b>	15,000:1	15,000:1	15,000:1	15,000:1
<b>Keystone Correction</b>	Vertical +/-40°	Vertical +/-40°	Vertical +/-40°	Vertical +/-40°
<b>Projection Lens</b>	F = 2.5 - 2.72, f = 17.81 - 21.35 mm	F = 2.5 - 2.72, f = 17.81 - 21.35 mm	F = 2.42 - 2.97, f = 20.70 - 31.05 mm	F = 2.42 - 2.97, f = 20.70 - 31.05 mm
<b>Zoom Ratio</b>	1.2x	1.2x	1.5x	1.5x
<b>Throw Ratio</b>	1.6 - 1.92 : 1	1.28 - 1.54 : 1	1.83 - 2.75 : 1	1.46 - 2.20 : 1
<b>Image Size (Diagonal)</b>	25.6" - 256.4"	30.2" - 302.3"	21.5" - 269.7"	25.3" - 317.99"
<b>Projection Distance</b>	1 - 10 m	1 - 10 m	1.2 - 10 m	1.2 - 10 m
<b>Offset (Based on Full Image Height)</b>	114%	112%	114%	112%
<b>Lens Shift Range</b>	NA	NA	NA	NA
<b>Video Compatibility</b>	SDTV (480i, 576i), EDTV (480p, 576p), HDTV (720p, 1080i/p), NTSC (M, 3.58/4.43 MHz), PAL (B, D, G, H, I, M, N), SECAM (B, D, G, K, K1, L)	SDTV (480i, 576i), EDTV (480p, 576p), HDTV (720p, 1080i/p), NTSC (M, 3.58/4.43 MHz), PAL (B, D, G, H, I, M, N), SECAM (B, D, G, K, K1, L)	SDTV (480i, 576i), EDTV (480p, 576p), HDTV (720p, 1080i/p), NTSC (M, 3.58/4.43 MHz), PAL (B, D, G, H, I, M, N), SECAM (B, D, G, K, K1, L)	SDTV (480i, 576i), EDTV (480p, 576p), HDTV (720p, 1080i/p), NTSC (M, 3.58/4.43 MHz), PAL (B, D, G, H, I, M, N), SECAM (B, D, G, K, K1, L)
<b>I/O Connection Ports</b>	VGA-In (x2), HDMI v1.4b, Composite Video, S-Video, Audio-In (Mini-Jack x3), Microphone-In (Mini-Jack), VGA-Out (15pin D-Sub), 12v Trigger (3.5mm Mini-Jack), USB A (Power Only), RJ45, RS-232, USB miniB (Service)	VGA-In (x2), HDMI v1.4b, Composite Video, S-Video, Audio-In (Mini-Jack x3), Microphone-In (Mini-Jack), VGA-Out (15pin D-Sub), 12v Trigger (3.5mm Mini-Jack), USB A (Power Only), RJ45, RS-232, USB miniB (Service)	VGA-In (x2), HDMI v1.4 (HDMIx1, HDMI/MHLx1), S-Video, Composite Video, Audio-In (RCA), Audio-In (Mini-Jack), VGA-Out (15pin D-Sub), Audio-Out (Mini-Jack), Microphone-In (Mini-Jack), RJ45, RS-232, 12v Trigger (3.5mm Mini-Jack), USB A (Power Only), USB miniB (Service)	VGA-In (x2), HDMI v1.4 (HDMIx1, HDMI/MHLx1), S-Video, Composite Video, Audio-In (RCA), Audio-In (Mini-Jack), VGA-Out (15pin D-Sub), Audio-Out (Mini-Jack), Microphone-In (Mini-Jack), RJ45, RS-232, 12v Trigger (3.5mm Mini-Jack), USB A (Power Only), USB miniB (Service)
<b>Dimensions (W x D x H)</b>	314 x 216 x 126 mm	314 x 216 x 126 mm	314 x 216 x 126 mm	314 x 216 x 126 mm
<b>Weight</b>	3.05 kg	3.05 kg	3.2 kg	3.2 kg
<b>Speakers</b>	10W	10W	10W	10W
<b>Noise Level</b>	36dB/32dB (Normal/Eco. Mode)	36dB/32dB (Normal/Eco. Mode)	38dB/34dB (Normal/Eco. Mode)	38dB/34dB (Normal/Eco. Mode)
<b>Lamp Life and Type</b>	3,500/5,000/7,000 Hours (Normal/Eco./ Dynamic Eco. Mode), 240W/ 190W	3,500/5,000/7,000 Hours (Normal/Eco./ Dynamic Eco. Mode), 240W/ 190W	2,500/3,000/3,500 Hours (Normal/Eco./ Dynamic Eco. Mode), 310W/ 245W	2,500/3,000/3,500 Hours (Normal/Eco./ Dynamic Eco. Mode), 310W/ 245W
<b>Power</b>	Supply: AC 100-240V, 50/60Hz, Consumption: 260W (Eco. Mode), 320W (Normal Mode), <0.5W (Standby)	Supply: AC 100-240V, 50/60Hz, Consumption: 260W (Eco. Mode), 320W (Normal Mode), <0.5W (Standby).	Supply: AC 100-240V, 50/60Hz, Consumption: 320W (Eco. Mode), 410W (Normal Mode), <0.5W (Standby).	Supply: AC 100-240V, 50/60Hz, Consumption: 320W (Eco. Mode), 410W (Normal Mode), <0.5W (Standby).
<b>UPC</b>	814964339898	814964339904	813097021526	813097021540
<b>Warranty</b>	Standard/ Education	Standard/ Education	Standard	Standard/ Education



**DH833**



**DX977**



**DH976**



**DU978**

<b>Display Type</b>	Single 0.65" DLP® Technology by Texas Instruments	Single 0.7" DLP Technology by Texas Instruments	Single 0.65" DLP Technology by Texas Instruments	Single 0.67" DLP Technology by Texas Instruments
<b>Brightness</b>	4500 ANSI Lumens	6000 ANSI Lumens	4800 ANSI Lumens	5000 ANSI Lumens
<b>Native Resolution</b>	1080p (1920 x 1080)	XGA (1024 x 768)	1080p (1920 x 1080)	WUXGA (1920 x 1200)
<b>Supported Max. Resolution</b>	WUXGA (1920 x 1200) @60Hz	WUXGA (1920 x 1200) @60Hz	WUXGA (1920 x 1200) @60Hz	WUXGA (1920 x 1200) @60Hz
<b>Native Aspect Ratio</b>	16:9	4:3	16:9	16:10
<b>Contrast Ratio</b>	15000:1	15,000:1	15,000:1	15,000:1
<b>Keystone Correction</b>	Vertical +/-40°	Vertical +/-30°	Vertical +/-30°	Vertical +/-30°
<b>Projection Lens</b>	F = 2.42 - 2.97, f = 20.70 - 31.05 mm	F = 2.42 - 2.97, f = 20.9 - 31.05 mm	F = 2.42 - 2.97, f = 20.9 - 31.05 mm	F = 2.42 - 2.97, f = 20.9 - 31.05 mm
<b>Zoom Ratio</b>	1.5x	1.5x	1.5x	1.5x
<b>Throw Ratio</b>	1.46 - 2.20 : 1	1.43 - 2.14 : 1	1.39 - 2.09 : 1	1.39 - 2.09 : 1
<b>Image Size (Diagonal)</b>	25.3" - 317.99"	27.6" - 344.6"	25.9" - 324.9"	26.6" - 334"
<b>Projection Distance</b>	1.2 - 10 m	1.2 - 10 m	1.2 - 10 m	1.2 - 10 m
<b>Offset (Based on Full Image Height)</b>	115%	112%	115%	122%
<b>Lens Shift Range</b>	NA	Vertical +8%, -2.5%	Vertical +15.8%, -3.8%	Vertical +9%, -3.1%
<b>Video Compatibility</b>	SDTV (480i, 576i), EDTV (480p, 576p), HDTV (720p, 1080i/p), NTSC (M, 3.58/4.43 MHz), PAL (B, D, G, H, I, M, N), SECAM (B, D, G, K, K1, L)	SDTV (480i, 576i), EDTV (480p, 576p), HDTV (720p, 1080i/p), NTSC (M, 3.58/4.43 MHz), PAL (B, D, G, H, I, M, N), SECAM (B, D, G, K, K1, L)	SDTV (480i, 576i), EDTV (480p, 576p), HDTV (720p, 1080i/p), NTSC (M, 3.58/4.43 MHz), PAL (B, D, G, H, I, M, N), SECAM (B, D, G, K, K1, L)	SDTV (480i, 576i), EDTV (480p, 576p), HDTV (720p, 1080i/p), NTSC (M, 3.58/4.43 MHz), PAL (B, D, G, H, I, M, N), SECAM (B, D, G, K, K1, L)
<b>I/O Connection Ports</b>	VGA-In (x2), HDMI v1.4 (HDMIx2, HDMI/MHLx1), S-Video, Composite Video, Audio-In (RCA), Audio-In (Mini-Jack), VGA-Out (15pin D-Sub), Audio-Out (Mini-Jack), Microphone-In (Mini-Jack), RJ45, RS-232, 12v Trigger (3.5mm Mini-Jack), USB A (Power Only), USB miniB (Service)	VGA-In (x2), HDMI v1.4 (x2), Display Port, S-Video, Composite Video, Audio-In (RCA), Audio-In (Mini-Jack), VGA-Out (15pin D-Sub), Audio-Out (Mini-Jack), 12v Trigger (3.5mm Mini-Jack), 3D-Sync Out, RJ45, RS-232, USB B (Service)	VGA-In (x2), HDMI v1.4 (x2), Display Port, S-Video, Composite Video, Audio-In (RCA), Audio-In (Mini-Jack), VGA-Out (15pin D-Sub), Audio-Out (Mini-Jack), 12v Trigger (3.5mm Mini-Jack), 3D-Sync Out, RJ45, RS-232, USB B (Service)	VGA-In (x2), HDMI v1.4 (x2), Display Port, S-Video, Composite Video, Audio-In (RCA), Audio-In (Mini-Jack), VGA-Out (15pin D-Sub), Audio-Out (Mini-Jack), 12v Trigger (3.5mm Mini-Jack), 3D-Sync Out, RJ45, RS-232, USB B (Service)
<b>Dimensions (W x D x H)</b>	314 x 216 x 126 mm	332.8 x 255 x 114.6 mm	332.8 x 255 x 114.6 mm	332.8 x 255 x 114.6 mm
<b>Weight</b>	3.2 kg	3.95 kg	3.95 kg	3.95 kg
<b>Speakers</b>	10W	3W	3W	3W
<b>Noise Level</b>	38dB/34dB (Normal/Eco. Mode)	36dB/30dB (Normal/Eco. Mode)	36dB/30dB (Normal/Eco. Mode)	36dB/30dB (Normal/Eco. Mode)
<b>Lamp Life and Type</b>	2,500/3,000/3,500 Hours (Normal/Eco./ Dynamic Eco. Mode), 310W/245W	2,500/3,500/4,000 Hours (Normal/Eco./ Dynamic Eco. Mode), 310W/ 245W	2,500/3,500/4,000 Hours (Normal/Eco./ Dynamic Eco. Mode), 310W/ 245W	2,500/3,500/4,000 Hours (Normal/Eco./ Dynamic Eco. Mode), 310W/ 245W
<b>Power</b>	Supply: AC 100-240V, 50/60Hz, Consumption: 320W (Eco. Mode), 410W (Normal Mode), <0.5W (Standby)	Supply: AC 100-240V, 50/60Hz. Consumption: 300W (Eco. Mode), 370W (Normal Mode), <0.5W (Standby)	Supply: AC 100-240V, 50/60Hz. Consumption: 300W (Eco. Mode), 370W (Normal Mode), <0.5W (Standby)	Supply: AC 100-240V, 50/60Hz. Consumption: 300W (Eco. Mode), 370W (Normal Mode), <0.5W (Standby)
<b>UPC</b>	813097 021755	813097 021380	813097 021427	813097 021465
<b>Warranty</b>	Standard/ Education	Standard	Standard	Standard

# Multimedia Projectors specification



**DX3351**



**DW3321**



**DH3331**



**DU3341**

<b>Display Type</b>	Single 0.7" DLP Technology by Texas Instruments	Single 0.65" DLP Technology by Texas Instruments	Single 0.65" DLP Technology by Texas Instruments	Single 0.67" DLP Technology by Texas Instruments
<b>Brightness</b>	6000 ANSI Lumens	5100 ANSI Lumens	5000 ANSI Lumens	5200 ANSI Lumens
<b>Native Resolution</b>	XGA (1024 x 768)	WXGA (1280 x 800)	1080p (1920 x 1080)	WUXGA (1920 x 1200)
<b>Supported Max. Resolution</b>	WUXGA (1920 x 1200) @60Hz	WUXGA (1920 x 1200) @60Hz	WUXGA (1920x1200) @60Hz	WUXGA (1920x1200) @60Hz
<b>Native Aspect Ratio</b>	4:3	16:10	16:9	16:10
<b>Contrast Ratio</b>	10,000:1	10,000:1	10000:1	10,000:1
<b>Keystone Correction</b>	Vertical +/--30°; Horizontal +/- 25°	Vertical +/--30°; Horizontal +/- 25°	Vertical +/--30°; Horizontal +/- 25°	Vertical +/--30°; Horizontal +/- 25°
<b>Projection Lens</b>	F = 2.45 - 3.22, f = 18.8 - 32 mm	F = 2.45 - 3.22, f = 18.8 - 32 mm	F = 2.45 - 3.22, f = 18.8 - 32 mm	F = 2.45 - 3.22, f = 18.8 - 32 mm
<b>Zoom Ratio</b>	1.7x	1.7x	1.7x	1.7x
<b>Throw Ratio</b>	1.3 - 2.2 : 1	1.32 - 2.24 : 1	1.25 - 2.13 : 1	1.25 - 2.13 : 1
<b>Image Size (Diagonal)</b>	23" - 378"	21" - 351"	21" - 361"	22" - 371"
<b>Projection Distance</b>	1 - 10 m	1 - 10 m	1 - 10 m	1 - 10 m
<b>Offset (Based on Full Image Height)</b>	112%	117%	118%	111%
<b>Lens Shift Range</b>	Vertical +3%, -10.5%; Horizontal +/--3.8%	Vertical +23.7%, -12.7%; Horizontal +/--10.9%	Vertical +28.7%, -13.5%; Horizontal +/--10.3%	Vertical +20.8%, -12.1%; Horizontal +/--10.3%
<b>Video Compatibility</b>	SDTV (480i, 576i), EDTV (480p, 576p), HDTV (720p, 1080i/p), NTSC (M, 3.58/4.43 MHz), PAL (B, D, G, H, I, M, N), SECAM (B, D, G, K, K1, L)	SDTV (480i, 576i), EDTV (480p, 576p), HDTV (720p, 1080i/p), NTSC (M, 3.58/4.43 MHz), PAL (B, D, G, H, I, M, N), SECAM (B, D, G, K, K1, L)	SDTV (480i, 576i), EDTV (480p, 576p), HDTV (720p, 1080i/p), NTSC (M, 3.58/4.43 MHz), PAL (B, D, G, H, I, M, N), SECAM (B, D, G, K, K1, L)	SDTV (480i, 576i), EDTV (480p, 576p), HDTV (720p, 1080i/p), NTSC (M, 3.58/4.43 MHz), PAL (B, D, G, H, I, M, N), SECAM (B, D, G, K, K1, L)
<b>I/O Connection Ports</b>	VGA-In (x2), HDMI v1.4 (HDMIx1, HDMI/MHLx1), DVI-D, Component (5 BNC) (RGBHV), S-Video, Composite Video, Audio-In (RCA), Audio-In (Mini-Jack x3), Microphone-In (Mini-Jack), USB A (for wifi and PC free viewer x2), USB miniB (USB Display), VGA-Out (15pin D-Sub), Audio-Out (RCA), Audio-Out (Mini-Jack), Remote Jack (Wire Remote In and Out), RJ-45 (LAN), RS-232, USB B (Service), USB B (Service), 3D-Sync Out, 12v Trigger (3.5mm Mini-Jack), 3D-Sync Out	VGA-In (x2), HDMI v1.4 (HDMIx1, HDMI/MHLx1), RJ-45 (HDBaseT), DVI-D, Component (5 BNC) (RGBHV), S-Video, Composite Video, Audio-In (RCA), Audio-In (Mini-Jack x3), Microphone-In (Mini-Jack), USB A (for wifi and PC free viewer x2), USB miniB (USB Display), VGA-Out (15pin D-Sub), Audio-Out (RCA), Audio-Out (Mini-Jack), Remote Jack (Wire Remote In and Out), RJ-45 (LAN), RS-232, USB B (Service), 12v Trigger (3.5mm Mini-Jack), 3D-Sync Out	VGA-In (x2), HDMI v1.4 (HDMIx1, HDMI/MHLx1), RJ-45 (HDBaseT), DVI-D, Component (5 BNC) (RGBHV), S-Video, Composite Video, Audio-In (RCA), Audio-In (Mini-Jack x3), Microphone-In (Mini-Jack), USB A (Power Only), USB miniB (USB Display), VGA-Out (15pin D-Sub), Audio-Out (RCA), Audio-Out (Mini-Jack), Remote Jack (Wire Remote In and Out), RJ-45 (LAN), RS-232, USB B (Service), 12v Trigger (3.5mm Mini-Jack), 3D-Sync Out	VGA-In (x2), HDMI v1.4 (HDMIx1, HDMI/MHLx1), RJ-45 (HDBaseT), DVI-D, Component (5 BNC) (RGBHV), S-Video, Composite Video, Audio-In (RCA), Audio-In (Mini-Jack x3), Microphone-In (Mini-Jack), USB A (Power Only), VGA-Out (15pin D-Sub), Audio-Out (RCA), Audio-Out (Mini-Jack), Remote Jack (Wire Remote In and Out), RJ-45 (LAN), RS-232, USB B (Service), 12v Trigger (3.5mm Mini-Jack), 3D-Sync Out
<b>Dimensions (W x D x H)</b>	445 x 331 x 162 mm	446 x 331 x 162 mm	445 x 331 x 162 mm	445 x 331 x 162 mm
<b>Weight</b>	8.4 kg	8.4 kg	8.4 kg	8.4 kg
<b>Speakers</b>	7W x 2	7W x 2	7W x2	7W x2
<b>Noise Level</b>	36dB/33dB (Normal/Eco. Mode)	36dB/33dB (Normal/Eco. Mode)	36dB/33dB (Normal/Eco. Mode)	36dB/33dB (Normal/Eco. Mode)
<b>Lamp Life and Type</b>	1,500/3,500 Hours (Normal/Eco. Mode), 370W/ 280W	1,500/3,500 Hours (Normal/Eco. Mode), 370W/ 280W	1,500/3,500 Hours (Normal/Eco. Mode), 370W/280W	1,500/3,500 Hours (Normal/Eco. Mode), 370W/280W
<b>Power</b>	Supply: AC 100-240V, 50/60Hz, Consumption: 380W (Eco. Mode), 480W (Normal Mode), <0.5W (Standby)	Supply: AC 100-240V, 50/60Hz, Consumption: 380W (Eco. Mode), 480W (Normal Mode), <0.5W (Standby)	Supply: AC 100-240V, 50/60Hz, Consumption: 380W (Eco. Mode), 480W (Normal Mode), <0.5W (Standby)	Supply: AC 100-240V, 50/60Hz, Consumption: 380W (Eco. Mode), 480W (Normal Mode), <0.5W (Standby)
<b>UPC</b>	813097020307	813097020321	81309702034 5	new model available from 2016 Q3
<b>Warranty</b>	Standard	Standard	Standard	Standard

## Education

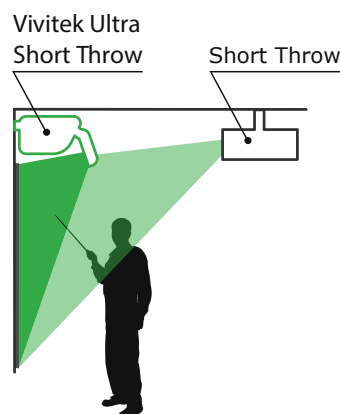
### Vivitek - The Reliable Teaching Partner



How to **enhance the learning experience?**  
Install a Vivitek projector and share information effectively with everyone on a big screen. In addition to projectors, Vivitek has also developed collaborative solutions that will give teachers and students more possibilities to interact when collaborating together.

#### Display Large Images in Limited Space

Vivitek's Ultra-Short-Throw projectors will display a large, **2 meters wide 100" image**, even from an extremely **short distance of 42cm** from the projection surface.



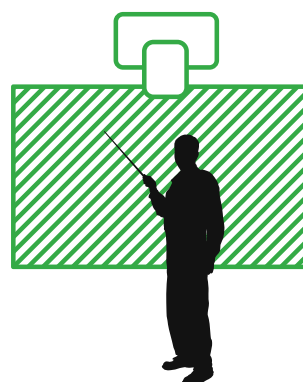
# Vivitek - The Reliable Teaching Partner



## Better Comfort for Presenters and Audiences

You don't have to worry about finding a suitable place for yourself during your presentation. Because the Ultra-Short-Throw series of projectors can be mounted extremely close to where you will display your presentation, you are free to stand in front of it, without blocking the image, casting a shadow on the screen, or having light shine directly into your eyes.

Vivitek Ultra Short Throw



## Flexible Mounting

Vivitek Ultra-Short-Throw projectors are a perfect fit for classrooms. These projectors can be wall-mounted directly above the projection surface, placed on a desktop, almost up against the wall. Simple choose the display method that works best for the environment.

Wall-mounted

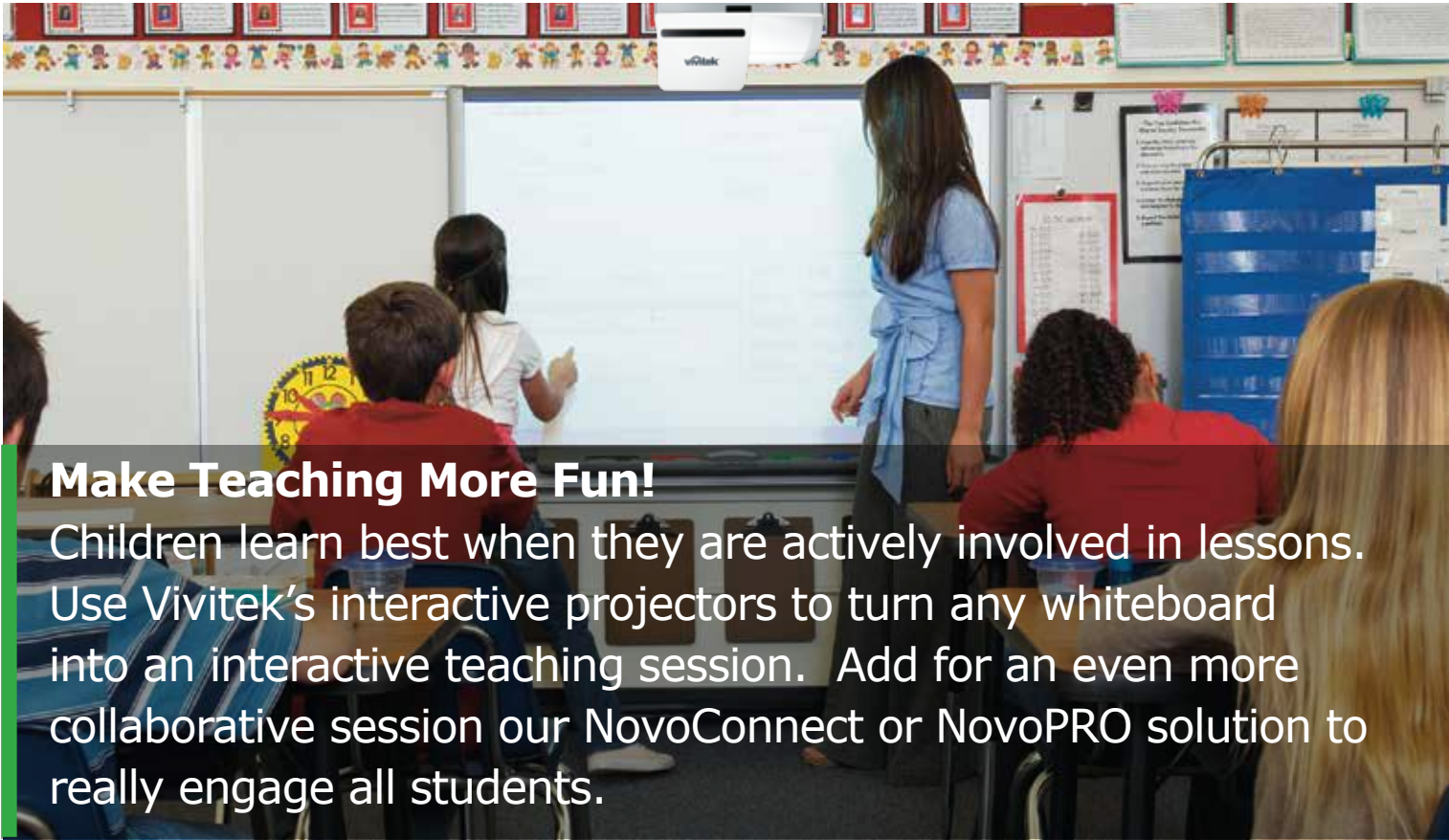


Ceiling-mounted



Desktop Placement





## Make Teaching More Fun!

Children learn best when they are actively involved in lessons. Use Vivitek's interactive projectors to turn any whiteboard into an interactive teaching session. Add for an even more collaborative session our NovoConnect or NovoPRO solution to really engage all students.

### DT02 Laser Finger Touch Module

The optional **DT02 Laser Finger Touch Module** kit allows students and teachers to write and draw simultaneously, enabling interaction for as many as 10 touchpoints. Create diagrams, make drawings, write, or do whatever else you need to. The interactive projector also supports 2 infrared pens which can be used for note-taking, highlighting, and making on-screen corrections.

### Features

- Up to 10 users can write, touch, draw and interact – all at the same time
- Easily control the module through common gestures and friendly actions
- There is a highly responsive finger touch control panel
- Auto calibration goes really fast for easy setup and configuration
- The DT02 Laser Finger Touch Module creates an interactive area up to 90°
- The module is powered directly from projector
- It can be used on flat surfaces, such as a wall or white board.



# Vivitek - The Reliable Teaching Partner

## Interactive Collaboration Software

The Interactive Collaboration Software allows teachers and students to work together on the projected whiteboard and to share remarks. Now your lessons can engage everyone, become great opportunities to exchange thoughts and learn from one another. The software is included **free of charge** with the interactive projectors.



Simple, clear, and easy to use menu interface

## Features

The interactive collaboration software is designed so that:

- It is absolutely user-friendly
- Documents and image files can be directly imported into the lesson content
- Either a pen or finger can be used to make notes in various colors
- Students and teachers can work simultaneously or independently

## Education Warranty Program

Vivitek realises that investing in projection equipment is an important business decision, so we have you covered. Vivitek offers extended warranties for all educational institutions in the EMEA region:

- 5 years on projectors, and 3 years or 2000 hours on lamp usage, whichever comes first
- For all models purchased by educational institutions in the EMEA region
- Available for all projectors listed as education portfolio
- For more information on our education warranty program please visit: [www.vivitek.eu/edureg](http://www.vivitek.eu/edureg)



# NovoConnect & NovoPRO

## Wireless Presentation and Collaboration System



The wireless presentation system takes business meetings or teaching sessions to a new level of collaboration and interaction. The presenter can wirelessly interact and share the digital content with attendees and vice versa via their PCs, tablets or other portable devices. The presentation solutions are compatible with Windows, Mac OS, Chromebook, iOS and Android operating systems and with all Vivitek's projectors.



# NovoConnect™ & NovoPRO specification

## NovoConnect™ and NovoPRO Features

- Allows up to 64 users to connect, while 4 can present simultaneously
- WiFi Hotspot mode (with up to 8 participants) for quick set up or client mode for full integration
- Cross-platform compatibility
- Seamless WiFi video transmission in 1080p - sixty frames per second<sup>(1)</sup>
- Full mirroring of PC/Mac, Chromebook or mobile devices directly to the projector<sup>(1)</sup>
- Access to cloud storage (in client mode)
- Easy transfer of meeting host role
- Data encryption in Corporate mode
- Launcher USB hub to allow direct meeting participation without software installation
- Touch screen support<sup>(1)</sup>
- Remote management of all Novo devices for IT
- Free software upgrades

<sup>(1)</sup>only for NovoPRO



**NovoConnect™**



**NovoPRO**

Compatibility	-	iOS and Android Mobile Screen-Mirroring
Security	-	Enterprise-level encryption AES-128
WiFi standard	802.11a/b/g/n 2.4 GHz & 5 GHz	802.11ac, 2T2R, 802.11b/g/n 2.4GHz & 5 GHz
Quality	Screen sharing @ 1080p, 30 fps Video playback @ 1080p, 30 fps	Screen sharing @ 1080p & WUXGA, 60 fps Video playback up to Ultra HD (3840x2160)
Control	Moderator/Host in Control	
Participants	Up to 64 participants & 4 in split screen	
Connectivity	Cross-platform connection capacity & easy QR code support connection	

### NovoConnect™ USB Ethernet Adapter

The USB 2.0 Ethernet adapter enables 10/100Mbps bandwidth performance and a reliable wired connection between NovoConnect and the environment's LAN based network.



### NovoConnect™ Quick Launcher

The Quick Launcher is a Plug and Play USB Dongle preloaded with the NovoConnect desktop streaming software.



### NovoPRO Launcher

The Launcher ensures that visitors do not need to install software on their laptop. With the Launcher they can simply plug and connect to the system.



# Short and Ultra-Short Throw Projectors

Visual learning at its best

Resolutions: XGA,  
WXGA and 1080p

High brightness up to  
3600 ANSI Lumens

Contrast ratio up to  
15,000:1

Lamp life up to 10,000  
hours



*Why are the short and ultra-short throw projectors a great fit for classrooms?*

- They will **work well in any type of education environment**. You can display images **up to 100" from a 42 cm** distance with the Ultra-Short-Throw projector and **up to 90" from less than 1 m** with a Short-Throw projector.
- The interactive projectors turn **any surface into an interactive area** and change the way for classroom collaboration by adding the **Laser Finger Touch Module (DT02), NovoConnect and NovoPRO**.



**Short & Ultra-Short Throw Projectors**  
Visual learning at its best





**DX881ST**



**DW882ST**



**D795WT**



**D755WT**

<b>Display Type</b>	Single 0.55" DLP Technology by Texas Instruments	Single 0.65" DLP Technology by Texas Instruments	Single 0.65" DLP Technology by Texas Instruments	Single 0.65" DLP Technology by Texas Instruments
<b>Brightness</b>	3300 ANSI Lumens	3600 ANSI Lumens	3000 ANSI Lumens	3300 ANSI Lumens
<b>Native Resolution</b>	XGA (1024 x 768)	WXGA (1280 x 800)	WXGA (1280 x 800)	WXGA (1280 x 800)
<b>Supported Max. Resolution</b>	WUXGA (1920 x 1200) @60Hz	WUXGA (1600 x 1200) @60Hz	1080p (1920 x 1080) @60Hz	WUXGA (1920 x 1200) @60Hz
<b>Native Aspect Ratio</b>	4:3	16:10	16:10	16:10
<b>Contrast Ratio</b>	15,000:1	15,000:1	2,500:1	10,000:1
<b>Keystone Correction</b>	Vertical +/-40°	Vertical +/-40°	Vertical +/- 15°	Vertical +/- 40°
<b>Projection Lens</b>	F = 2.8, f = 7.26 mm	F = 2.8, f = 7.51 mm	F = 2.4, f = 2.72 mm	F = 2.5, f = 5.1 mm
<b>Zoom Ratio</b>	1x	1x	1x	1x
<b>Throw Ratio</b>	0.62:1	0.52:1	0.19:1	0.35:1
<b>Image Size (Diagonal)</b>	60" - 100"	70" - 100"	87" - 97"	80" - 100"
<b>Projection Distance</b>	763 - 1273 mm	779 - 1127 mm	342 - 369 mm	283 - 446 mm
<b>Offset (Based on Full Image Height)</b>	114%	111%	129%	120%
<b>Video Compatibility</b>	SDTV (480i, 576i) / EDTV (480p, 576p) / HDTV (720p, 1080i, 1080p), NTSC (M, 3.58/4.43 MHz), PAL (B,D,G,H,I,M,N) SECAM (B,D,G,K,K1,L)	SDTV (480i, 576i) / EDTV (480p, 576p) / HDTV (720p, 1080i, 1080p), NTSC (M, 3.58/4.43 MHz), PAL (B,D,G,H,I,M,N) SECAM (B,D,G,K,K1,L)	SDTV (480i, 576i) / EDTV (480p, 576p) / HDTV (720p, 1080i, 1080p), NTSC (M, 3.58/4.43 MHz), PAL (B,D,G,H,I,M,N) SECAM (B,D,G,K,K1,L)	SDTV (480i, 576i) / EDTV (480p, 576p) / HDTV (720p, 1080i, 1080p), NTSC (M, 3.58/4.43 MHz), PAL (B,D,G,H,I,M,N) SECAM (B,D,G,K,K1,L)
<b>I/O Connection Ports</b>	VGA-In (x2), HDMI v1.4b, Composite Video, S-Video, Audio-In (Mini-Jack x3), Microphone-In (Mini-Jack) VGA-Out (15pin D-Sub), 12v Trigger (3.5mm Mini-Jack), USB A (Power Only), RJ45, RS-232, USB miniB (Service)	VGA-In (x2), HDMI v1.4b, Composite Video, S-Video, Audio-In (Mini-Jack x3), Microphone-In (Mini-Jack) VGA-Out (15pin D-Sub), 12v Trigger (3.5mm Mini-Jack), USB A (Power Only), RJ45, RS-232, USB miniB (Service)	VGA-In (x2), HDMI v1.3, Composite Video, S-Video, Audio-In (Mini-Jack), VGA-Out (15pin D-Sub), Audio-Out (Mini-Jack), RJ45, RS-232, USB B (Service)	VGA-In (x2), HDMI v1.4, Display Port, Composite Video, S-Video, Audio-In (Mini-Jack), Audio-In (RCA), Microphone-In (Mini-Jack) VGA-Out (15pin D-Sub), Audio-Out (Mini-Jack), 3D-Sync Out, USB A (Power Only), RJ45, RS-232, USB B (Service)
<b>Dimensions (W x D x H)</b>	314 x 216 x 126 mm	314 x 216 x 126 mm	354 x 319 x 157 mm (not including height of mirror)	288 x 375 x 123 mm (not including height of mirror)
<b>Weight</b>	3,2 kg	3,2 kg	9 kg	5 kg
<b>Speakers</b>	10W	10W	10W	10W x 2
<b>Noise Level</b>	36dB/32dB (Normal/Eco. Mode)	36dB/32dB (Normal/Eco. Mode)	29dB/27dB (Normal/Eco. Mode)	33dB/29dB (Normal/Eco. Mode)
<b>Lamp Life and Type</b>	3,500/5,000/7,000 Hours (Normal/Eco./ Dynamic Eco. Mode), 240W/ 190W	3,500/5,000/7,000 Hours (Normal/Eco./ Dynamic Eco. Mode), 240W/ 190W	4,000/6,000 Hours (Normal/Eco. Mode), 220W	5,000/10,000 Hours (Normal/Eco. Mode), 230W/ 200W
<b>Power</b>	Supply: AC 100-240V, 50/60Hz. Consumption: 250W (Eco. Mode), 310W (Normal Mode), <0.5W (Standby)	Supply: AC 100-240V, 50/60Hz. Consumption: 250W (Eco. Mode), 310W (Normal Mode), <0.5W (Standby)	Supply: AC 100-240V, 50/60Hz. Consumption: 230W (Eco. Mode), 290W (Normal Mode), <1W (Standby)	Supply: AC 100-240V, 50/60Hz. Consumption: 250W (Eco. Mode), 290W (Normal Mode), <0.5W (Standby)
<b>UPC</b>	814964 339836	814964 339843	814964 335241	814964 338631
<b>Warranty</b>	Standard/ Education	Standard/ Education	Standard/ Education	Standard/ Education

# Short and Ultra-Short Throw Projectors specification



**DH758UST**



**D756USTi**



**DH759USTi**

<b>Display Type</b>	Single 0.65" DLP Technology by Texas Instruments	Single 0.65" DLP Technology by Texas Instruments	Single 0.65" DLP Technology by Texas Instruments
<b>Brightness</b>	3500 ANSI Lumens	3300 ANSI Lumens	3500 ANSI Lumens
<b>Native Resolution</b>	1080p (1920 x 1080)	WXGA (1280 x 800)	1080p (1920 x 1080)
<b>Supported Max. Resolution</b>	WUXGA (1920 x 1200) @60Hz	WUXGA (1920 x 1200) @60Hz	WUXGA (1920 x 1200) @60Hz
<b>Native Aspect Ratio</b>	16:9	16:10	16:9
<b>Contrast Ratio</b>	10,000:1	10000:1	10,000:1
<b>Keystone Correction</b>	Vertical +/- 40°	Vertical +/- 40°	Vertical +/- 40°
<b>Projection Lens</b>	F = 2.5, f = 5.1 mm	F = 2.5, f = 5.1 mm	F = 2.5, f = 5.1 mm
<b>Zoom Ratio</b>	1x	1x	1x
<b>Throw Ratio</b>	0.33: 1	0.35: 1	0.33: 1
<b>Image Size (Diagonal)</b>	88" - 110"	80" - 100"	88" - 110"
<b>Projection Distance</b>	341 - 398 mm	341 - 398 mm	341 - 398 mm
<b>Offset (Based on Full Image Height)</b>	124%	120%	124%
<b>Video Compatibility</b>	SDTV (480i, 576i) / EDTV (480p, 576p) / HDTV (720p, 1080i, 1080p), NTSC (M, 3.58/4.43 MHz), PAL (B,D,G,H,I,M,N), SECAM (B,D,G,K,K1,L)	SDTV (480i, 576i) / EDTV (480p, 576p) / HDTV (720p, 1080i, 1080p), NTSC (M, 3.58/4.43 MHz), PAL (B,D,G,H,I,M,N), SECAM (B,D,G,K,K1,L)	SDTV (480i, 576i) / EDTV (480p, 576p) / HDTV (720p, 1080i, 1080p), NTSC (M, 3.58/4.43 MHz), PAL (B,D,G,H,I,M,N), SECAM (B,D,G,K,K1,L)
<b>I/O Connection Ports</b>	VGA-In (x2), HDMI v1.4 (HDMIx1, HDMI/MHLx1), Composite Video, S-Video, Audio-In (Mini-Jack), Audio-In (RCA), Microphone-In (Mini-Jack) VGA-Out (15pin D-Sub), Audio-Out (Mini-Jack), USB A (Power Only), RJ45, RS-232, USB B (Service)	VGA-In (x2), HDMI v1.4 (HDMIx1, HDMI/MHLx1), Composite Video, S-Video, Audio-In (Mini-Jack), Audio-In (RCA), Microphone-In (Mini-Jack) VGA-Out (15pin D-Sub), Audio-Out (Mini-Jack), USB A (Power Only), RJ45, RS-232, USB B (Service), USB miniB (Interactivity), Interactive Function - IR Pen, Optional Finger Touch	VGA-In (x2), HDMI v1.4 (HDMIx1, HDMI/MHLx1), Composite Video, S-Video, Audio-In (Mini-Jack), Audio-In (RCA), Microphone-In (Mini-Jack) VGA-Out (15pin D-Sub), Audio-Out (Mini-Jack), USB A (Power Only), RJ45, RS-232, USB B (Service), USB miniB (Interactivity), Interactive Function - IR Pen, Optional Finger Touch
<b>Dimensions (W x D x H)</b>	288 x 375 x 123 mm (not including height of mirror)	288 x 375 x 123 mm (not including height of mirror)	288 x 375 x 123 mm (not including height of mirror)
<b>Weight</b>	5 kg	5 kg	5 kg
<b>Speakers</b>	10W x 2	10W x 2	10W x 2
<b>Noise Level</b>	37dB/33dB (Normal/Eco. Mode)	33dB/29dB (Normal/Eco. Mode)	37dB/33dB (Normal/Eco. Mode)
<b>Lamp Life and Type</b>	3,000/4,000/7,000 Hours (Normal/Eco./Dynamic Eco. Mode), 280W/ 230W	5,000/10,000 Hours (Normal/Eco. Mode), 230W/200W	3,000/4,000/7,000 Hours (Normal/Eco./Dynamic Eco. Mode), 280W/230W
<b>Power</b>	Supply: AC 100-240V, 50/60Hz Consumption: 320W (Eco. Mode), 380W (Normal Mode) <0.5W (Standby)	Supply: AC 100-240V, 50/60Hz Consumption: 290W (Normal Mode), 250W (Eco. Mode), <0.5W (Standby)	Supply: AC 100-240V, 50/60Hz Consumption: 380W/320W (Normal/Eco. Mode), <0.5W (Standby)
<b>UPC</b>	813097020246	New model available from 2016 Q3	New model available from 2016 Q3
<b>Warranty</b>	Standard/ Education	Standard/ Education	Standard/ Education

# Large Venue

## Professional Projectors That are Easy to Handle



Vivitek has created a line of professional projectors intended for high-end installation. The Large Venue series offers a wide choice of projectors, ranging from **4,000 up to 11,000** of **brightness**, either from a lamp or laser light source.

### Easy to Install

The projectors are designed with the AV installer in mind and feature:

- Interchangeable lens
- Motorised lens shift, zoom and focus
- User changeable colour wheels (varies by model)
- Easy lamp access

### Edge Blending Technology

By embedding edge blending and warping features we have made sure that the installation goes smoothly and quickly, delivering the best possible end result.

**Large Venue**

## Professional Projectors That are Easy to Handle

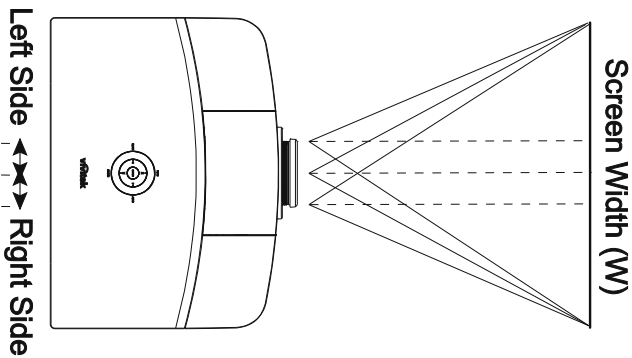


- **Motorized Lens Shift, Zoom & Focus**
- **Optional Lenses**
- **Changeable Colorwheels**
- **Dual Lamp Switching Technology**
- **Edge Blending & Warping**
- **HDBaseT**
- **High Brightness**

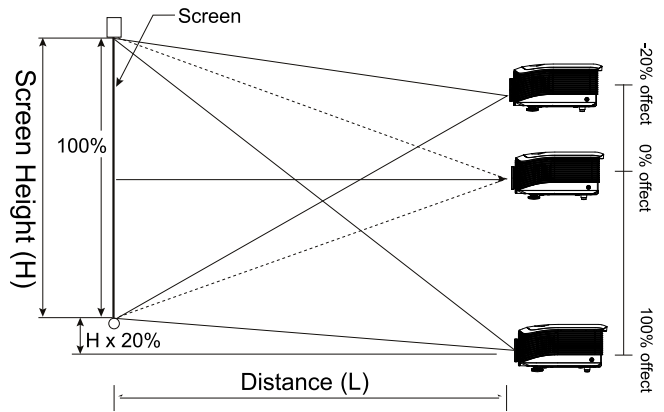
## Lens Shift



Vertical and horizontal lens shift adjustment allows for easier alignment on the screen without moving the projector and provides professional installers with greater flexibility. A number of Vivitek's large venue projectors have motorized zoom, focus and lens shift, allowing adjustment even when the projector is mounted in an area difficult to reach.



Horizontal image position adjustment.

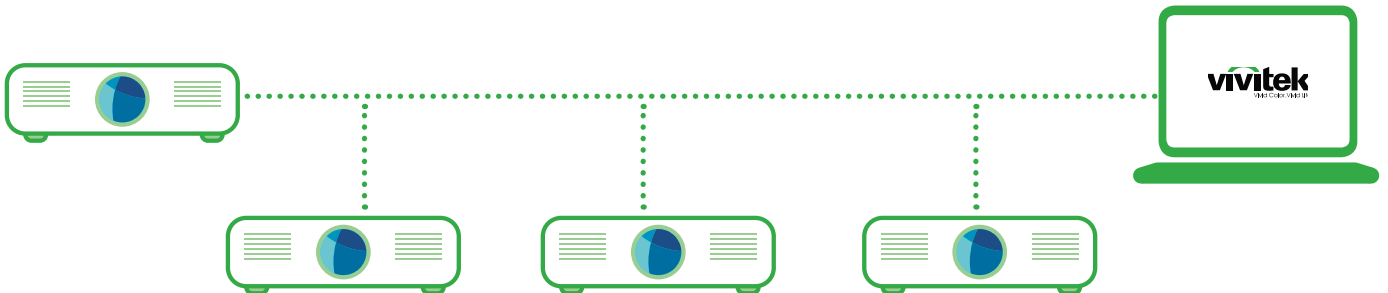


Vertical image position adjustment.

## Network Management



Let the **network administrator remotely manage and support all the projectors in a facility:** monitor the status, lamp life, alerts, access functions and other vital settings. This is only possible thanks to the **RJ45 network and Crestron® RoomView™**, allowing our the Vivitek Large Venue projectors to easily integrate into an existing IT network infrastructure.





# Professional Projectors That are Easy to Handle

## Interchangeable Lens Options



Vivitek offers a wide range of high quality interchangeable lenses to make sure the different projection needs are addressed.

D5000 Series	D6000 and D8000 Series	D9000 Series
<ol style="list-style-type: none"> <li>1. Short-Throw</li> <li>2. Short Throw Zoom</li> <li>3. Standard</li> <li>4. Middle-Throw</li> <li>5. Long Throw</li> </ol>	<ol style="list-style-type: none"> <li>1. Ultra Short Throw</li> <li>2. Ultra Wide Zoom</li> <li>3. Wide Fix</li> <li>4. Wide Zoom</li> <li>5. Standard</li> <li>6. Semi Long Zoom</li> <li>7. Long Zoom 1</li> <li>8. Long Zoom 2</li> </ol>	<ol style="list-style-type: none"> <li>1. Ultra Wide Zoom</li> <li>2. Short Throw</li> <li>3. Standard</li> <li>4. Long Throw</li> <li>5. Ultra Long Throw</li> </ol>



## Dual Lamp Switching Technology



**The Vivitek dual lamp projectors are designed for 24/7 operation.** Our dual lamp projection system gives users a projector that is always ready to go. The Dual Lamp switching technology ensures that if one lamp should go down, the projector will continue to operate by automatically switching to single lamp operation mode.

## Exchangeable Color Wheels

Vivitek offers projectors with either six or four segment color wheels. Additionally, selected models have dual color wheels simultaneously.

## Technologies and Features

At Vivitek, one of our top priorities is to follow latest technological developments and deliver innovative solutions in our high-performance Large Venue projectors.

### What are some of the exiting features?

#### Edge Blending

We have equipped selected Vivitek projectors with built-in edge blending. This feature allows several projector images to be seamlessly combined into one large projection. With built-in edge blending, there is no need for additional external edge blending hardware. All setup is conducted via the projector's OSD and remote control. The images can be blended as a "Strip", "Stack" or "Grid".

For different products and installation requirements, Vivitek offers ViviBlending - integrated hardware and edge blending software.

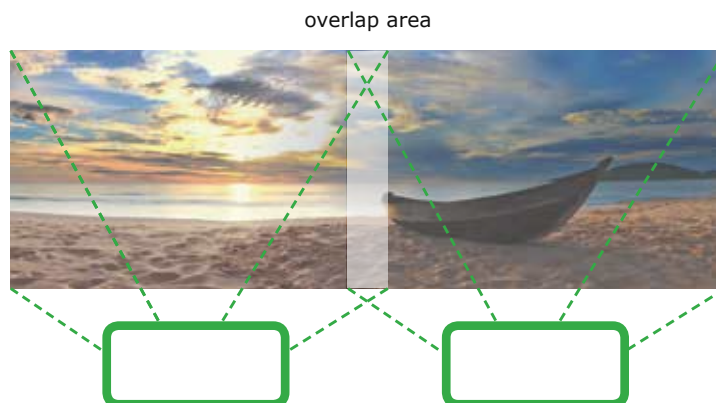


Image 1: The brighter overlapping area will be adjusted and blended using the projector's embedded blend control feature.

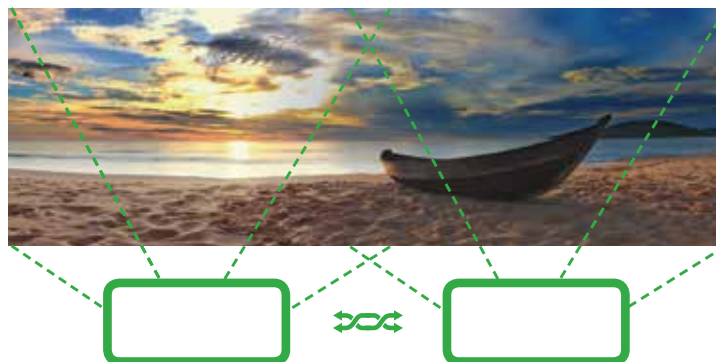
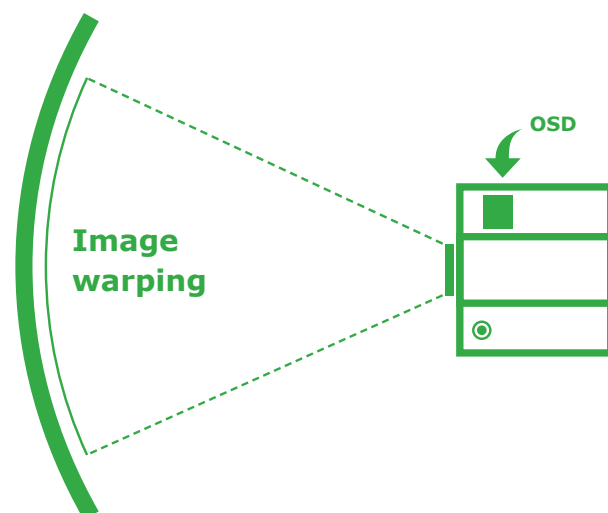


Image 2: Both of the projected images are seamlessly blended together creating one, impressive large format picture.

## Professional Projectors That are Easy to Handle

### Image Warping

This function allows for the projection on non-flat surfaces - such as curved screens or columns - without the need to use additional external hardware or software. The image adjustment is done through the projectors On-Screen Display (OSD) menu or through remote commands over the RS-232 or TCP/IP networks.



### Laser Technology

The Vivitek laser projectors are powered by an advanced solid state laser phosphor light source for an amazing brightness, colour accuracy, reliable projection and outstanding durability. With a lamp-less mercury free design and an astonishing 20,000 hours of operational time as well as optimum energy efficiency, the Vivitek laser projectors are environmentally friendly as well as installer-friendly with almost no maintenance to save time and resources.



### Large Venue Warranty

At Vivitek, we are committed to delivering high quality and reliable products that will meet a broad range of requirements, and bring satisfaction and enjoyment that is expected.

Vivitek treats this commitment very seriously by providing a 5-Year warranty on projectors, and 1-Year or 1,000 hour on lamps (whichever comes first) for all of the large venue models.



# D5000 Series

## Bright and versatile installation

Resolution: XGA, WXGA, 1080p and WUXGA

High brightness of up to 6000 ANSI Lumens

Contrast ratio 2,000:1

Lamp life up to 3,500 hours



*The D5000 Series is designed for, but not limited to, large venues such as boardrooms and lecture halls.*

- **Easy installation:** Thanks to a horizontal, vertical and centred lens shift.
- **Installation flexibility:** Provided by 5 bayonet-style lens options and a full lens shift across all lenses.
- **Integration within an existing IT network infrastructure** for projector monitoring and management, which is possible through the Crestron® RoomView compatibility feature
- **Compatibility with digital source formats:** Ensured by the comprehensive connectivity options including DisplayPort, DVI-D and HDMI.



## specification



D5010-WNL



D5110-WNL



D5190HD-WNL



D5380U-WNL

<b>Display Type</b>	Single 0.7" DLP Technology by Texas Instruments	Single 0.65" DLP Technology by Texas Instruments	Single 0.65" DLP Technology by Texas Instruments	Single 0.67" DLP Technology by Texas Instruments
<b>Brightness</b>	6000 ANSI Lumens	5000 ANSI Lumens	4700 ANSI Lumens	5000 ANSI Lumens
<b>Native Resolution</b>	XGA (1024 x 768)	WXGA (1280 x 800)	1080p (1920 x 1080)	WUXGA (1920 x 1200)
<b>Supported Max. Resolution</b>	WUXGA (1920 x 1200) @60Hz	WUXGA (1920 x 1200) @60Hz	WUXGA (1920 x 1200) @60Hz	WUXGA (1920 x 1200) @60Hz
<b>Native Aspect Ratio</b>	4:3	16:10	16:9	16:10
<b>Contrast Ratio</b>	2,000:1	2,000:1	2,000:1	2,000:1
<b>Keystone Correction</b>	Vertical +/- 40°	Vertical +/- 40°	Vertical +/- 40°	Vertical +/- 40°
<b>Projection Lens</b>	5 optional lenses from 0.81:1 to 3.11-5.18:1 throw ratio range	5 optional lenses from 0.81:1 to 3.15-5.26:1 throw ratio range	5 optional lenses from 0.78:1 to 3.00-5.01:1 throw ratio range	5 optional lenses from 0.78:1 to 3.00-5.01:1 throw ratio range
<b>Zoom</b>	Manual Zoom & Focus	Manual Zoom & Focus	Manual Zoom & Focus	Manual Zoom & Focus
<b>Offset (Based on Full Image Height)</b>	Manual Lens Shift	Manual Lens Shift	Manual Lens Shift	Manual Lens Shift
<b>Lens Shift Range</b>	Vertical +50%, -10%; Horizontal +/-5%	Vertical +55%, -15%; Horizontal +/-5%	Vertical +60%, -10%; Horizontal +/-5%	Vertical +55%, -15%; Horizontal +/-5%
<b>Video Compatibility</b>	SDTV (480i, 576i) / EDTV (480p, 576p) / HDTV (720p, 1080i, 1080p), NTSC (M, 3.58/4.43 MHz), PAL (B,D,G,H,I,M,N) SECAM (B,D,G,K,K1,L)	SDTV (480i, 576i) / EDTV (480p, 576p) / HDTV (720p, 1080i, 1080p), NTSC (M, 3.58/4.43 MHz), PAL (B,D,G,H,I,M,N) SECAM (B,D,G,K,K1,L)	SDTV (480i, 576i) / EDTV (480p, 576p) / HDTV (720p, 1080i, 1080p), NTSC (M, 3.58/4.43 MHz), PAL (B,D,G,H,I,M,N) SECAM (B,D,G,K,K1,L)	SDTV (480i, 576i) / EDTV (480p, 576p) / HDTV (720p, 1080i, 1080p), NTSC (M, 3.58/4.43 MHz), PAL (B,D,G,H,I,M,N) SECAM (B,D,G,K,K1,L)
<b>I/O Connection Ports</b>	VGA-In (x2), HDMI, Display Port, DVI-D, Component (5 BNC - RGBHV), Component (YpbPr), Composite Video, S-Video Audio-In (Mini-Jack x2), Audio-In (RCA x2), VGA-Out (15pin D-Sub), Audio-Out (Mini-Jack), Remote Jack (Wired Remote), 3D-Sync Out, 12v Trigger (3.5mm Mini-Jack), USB A (Power Only), RJ45 (LAN) RS-232, USB B (Service)	VGA-In (x2), HDMI, Display Port, DVI-D, Component (5 BNC - RGBHV), Component (YpbPr), Composite Video, S-Video Audio-In (Mini-Jack x2), Audio-In (RCA x2), VGA-Out (15pin D-Sub), Audio-Out (Mini-Jack), Remote Jack (Wired Remote), 3D-Sync Out, 12v Trigger (3.5mm Mini-Jack), USB A (Power Only), RJ45 (LAN) RS-232, USB B (Service)	VGA-In (x2), HDMI, Display Port, DVI-D, Component (5 BNC - RGBHV), Component (YpbPr), Composite Video, S-Video Audio-In (Mini-Jack x2), Audio-In (RCA x2), VGA-Out (15pin D-Sub), Audio-Out (Mini-Jack), Remote Jack (Wired Remote), 3D-Sync Out, 12v Trigger (3.5mm Mini-Jack), USB A (Power Only), RJ45 (LAN) RS-232, USB B (Service)	VGA-In (x2), HDMI, Display Port, DVI-D, Component (5 BNC - RGBHV), Component (YpbPr), Composite Video, S-Video Audio-In (Mini-Jack x2), Audio-In (RCA x2), VGA-Out (15pin D-Sub), Audio-Out (Mini-Jack), Remote Jack (Wired Remote), 3D-Sync Out, 12v Trigger (3.5mm Mini-Jack), USB A (Power Only), RJ45 (LAN) RS-232, USB B (Service)
<b>Dimensions (W x D x H)</b>	432 x 345 x 181mm	431 x 345 x 181mm	431 x 345 x 181mm	431 x 344 x 181mm
<b>Weight</b>	8,6 kg	8,6 kg	8,6 kg	8,6 kg
<b>Speakers</b>	3W x 2 (Stereo)	3W x 2 (Stereo)	3W x 2 (Stereo)	3W x 2 (Stereo)
<b>Noise Level</b>	42dB/37dB (Normal/Eco. Mode)	42dB/37dB (Normal/Eco. Mode)	42dB/37dB (Normal/Eco. Mode)	42dB/37dB (Normal/Eco. Mode)
<b>Lamp Life and Type</b>	1,500/3,500 Hours (Normal/Eco. Mode) 370W/ 280W	1,500/3,500 Hours (Normal/Eco. Mode) 370W/ 280W	1,500/3,500 Hours (Normal/Eco. Mode) 370W/ 280W	1,500/3,500 Hours (Normal/Eco. Mode) 370W/ 280W
<b>Power</b>	Supply: AC 100 - 240V Consumption: 340W (Eco. Mode), 450W (Normal Mode), Standby <0.5W	Supply: AC 100 - 240V Consumption: 340W (Eco. Mode), 450W (Normal Mode), Standby <0.5W	Supply: AC 100 - 240V Consumption: 340W (Eco. Mode), 450W (Normal Mode), Standby <0.5W	Supply: AC 100 - 240V Consumption: 340W (Eco. Mode), 450W (Normal Mode), Standby <0.5W
<b>UPC</b>	814964 338853	814964 338839	814964 39072	814964 338815
<b>Warranty</b>	Large Venue	Large Venue	Large Venue	Large Venue

# D6000 & D6800 Series

## Heavy duty dual lamp projectors

*Resolutions: XGA,  
WXGA and WUXGA*

*High brightness of up  
to 8000 ANSI Lumens*

*Contrast ratio up to  
3,000:1*

*Lamp life up to 3,500  
hours*



### *Why should you consider using these dual lamp projectors?*

The dual lamp projectors are intended for heavy duty applications, where maximum up-time and 24/7 operation is critical.

#### **These series of projectors will provide:**

- **Distribution of HD video and digital audio content** over CAT5e/6 LAN cable, supported by an HDBaseT interface.
- **Easy installation** guaranteed via a motorised focus and zoom, as well as horizontal and vertical shift.
- **Exceptional content display** thanks to as many as 8 lens options **keeping** up to **10 user defined Lens Position Memory (LPM)**, for focus, zoom, and lens shift.



# D6000 & D6800 Series specification



**DX6535**



**DW6035**



**DU6675**



**DX6831**



**DW6851**



**DU6871**

<b>Display Type</b>	Single 0.67" DLP Technology by Texas Instruments	Single 0.65" DLP Technology by Texas Instruments	Single 0.7" DLP Technology by Texas Instruments	Single 0.7" DLP Technology by Texas Instruments	Single 0.65" DLP Technology by Texas Instruments	Single 0.67" DLP Technology by Texas Instruments
<b>Brightness</b>	6700 ANSI Lumens	6000 ANSI Lumens	6000 ANSI Lumens	8000 ANSI Lumens	7000 ANSI Lumens	7300 ANSI Lumens
<b>Native Resolution</b>	XGA (1024 x 768)	WXGA (1280 x 800)	WUXGA (1920 x 1200)	XGA (1024 x 768)	WXGA (1280 x 800)	WUXGA (1920 x 1200)
<b>Supported Max. Resolution</b>	1080p (1920 x 1080) @60Hz	1080p (1920 x 1080) @60Hz	WUXGA (1920 x 1200) @60Hz	WUXGA (1920 x 1200) @60Hz	WUXGA (1920 x 1200) @60Hz	WUXGA (1920 x 1200) @60Hz
<b>Native Aspect Ratio</b>	4:3	16:10	16:10	4:3	16:10	16:10
<b>Contrast Ratio</b>	3,000:1	3,000:1	3,000:1	3,000:1	3,000:1	3,000:1
<b>Keystone Correction</b>	Vertical +/- 30°	Vertical +/- 30°	Vertical +/- 30°; Horizontal +/-30°	Vertical +/- 30°	Vertical +/- 30°	Vertical +/- 30°
<b>Projection Lens</b>	8 optional lenses from 0.39:1 to 5.5-8.56:1 throw ratio range	8 optional lenses from 0.40:1 to 5.56-8.67:1 throw ratio range	8 optional lenses from 0.38:1 to 5.31-8.26:1 throw ratio range	8 optional lenses from 0.39:1 to 5.5-8.56:1 throw ratio range	8 optional lenses from 0.40:1 to 5.56-8.67:1 throw ratio range	8 optional lenses from 0.38:1 to 5.31-8.26:1 throw ratio range
<b>Zoom</b>	Motorized Zoom & Focus	Motorized Zoom & Focus	Motorized Zoom & Focus	Motorized Zoom & Focus	Motorized Zoom & Focus	Motorized Zoom & Focus
<b>Offset (Based on Full Image Height)</b>	Motorized Lens Shift	Motorized Lens Shift	Motorized Lens Shift	Motorized Lens Shift	Motorized Lens Shift	Motorized Lens Shift
<b>Lens Shift Range</b>	Vertical +50%; Horizontal +/--10%	Vertical +50%; Horizontal +/--10%	Vertical +50%; Horizontal +/--10%	Vertical +50%; Horizontal +/--10%	Vertical +50%; Horizontal +/--10%	Vertical +50%; Horizontal +/--10%
<b>Video Compatibility</b>	SDTV (480i, 576i) / EDTV (480p, 576p) / HDTV (720p, 1080i, 1080p), NTSC (M, 3.58/4.43 MHz), PAL (B,D,G,H,I,M,N) SECAM (B,D,G,K,K1,L)	SDTV (480i, 576i) / EDTV (480p, 576p) / HDTV (720p, 1080i, 1080p), NTSC (M, 3.58/4.43 MHz), PAL (B,D,G,H,I,M,N) SECAM (B,D,G,K,K1,L)	SDTV (480i, 576i) / EDTV (480p, 576p) / HDTV (720p, 1080i, 1080p), NTSC (M, 3.58/4.43 MHz), PAL (B,D,G,H,I,M,N) SECAM (B,D,G,K,K1,L)	SDTV (480i, 576i) / EDTV (480p, 576p) / HDTV (720p, 1080i, 1080p), NTSC (M, 3.58/4.43 MHz), PAL (B,D,G,H,I,M,N) SECAM (B,D,G,K,K1,L)	SDTV (480i, 576i) / EDTV (480p, 576p) / HDTV (720p, 1080i, 1080p), NTSC (M, 3.58/4.43 MHz), PAL (B,D,G,H,I,M,N) SECAM (B,D,G,K,K1,L)	SDTV (480i, 576i) / EDTV (480p, 576p) / HDTV (720p, 1080i, 1080p), NTSC (M, 3.58/4.43 MHz), PAL (B,D,G,H,I,M,N) SECAM (B,D,G,K,K1,L)
<b>I/O Connection Ports</b>	VGA-In, DVI-D, Component (5 BNC - RG-BHV), Component (YpbPr), Component (RCA Yellow), S-Video, VGA-Out (15pin D-Sub), Remote Jack (Wired Remote), 3D-Sync Out, 12v Trigger (3.5mm Mini-Jack), RJ45 (LAN), RS-232, USB B (Service)	VGA-In, DVI-D, Component (5 BNC - RG-BHV), Component (YpbPr), Component (RCA Yellow), S-Video, VGA-Out (15pin D-Sub), Remote Jack (Wired Remote), 3D-Sync Out, 12v Trigger (3.5mm Mini-Jack), RJ45 (LAN), RS-232, USB B (Service)	VGA-In, HDMI, DVI-D, RJ45 (HDBaseT/LAN), Component (5 BNC - RG-BHV), Component (YpbPr), Component (RCA Yellow), S-Video, VGA-Out (15pin D-Sub), Remote Jack (Wired Remote), 3D-Sync Out, 12v Trigger (3.5mm Mini-Jack), RS-232, USB B (Service)	VGA-In, HDMI v1.4, Display Port, DVI-D, RJ45 (HDBaseT/LAN), Component (5 BNC - RG-BHV), Component (3 BNC - YpbPr, shared with RGBHV), VGA-Out (15pin D-Sub), Remote Jack (Wired Remote), 3D-Sync Out, 12v Trigger (3.5mm Mini-Jack), RS-232, USB B (Service)	VGA-In, HDMI v1.4, Display Port, DVI-D, RJ45 (HDBaseT/LAN), Component (5 BNC - RG-BHV), Component (3 BNC - YpbPr, shared with RGBHV), VGA-Out (15pin D-Sub), Remote Jack (Wired Remote), 3D-Sync Out, 12v Trigger (3.5mm Mini-Jack), RS-232, USB B (Service)	VGA-In, HDMI v1.4, Display Port, DVI-D, RJ45 (HDBaseT/LAN), Component (5 BNC - RG-BHV), Component (3 BNC - YpbPr, shared with RGBHV), VGA-Out (15pin D-Sub), Remote Jack (Wired Remote), 3D-Sync Out, 12v Trigger (3.5mm Mini-Jack), RS-232, USB B (Service)
<b>Dimensions (WxDxH)</b>	508 x 389 x 195mm	508 x 389 x 195mm	508 x 389 x 195mm	505 x 520 x 195mm	505 x 520 x 195mm	505 x 520 x 195mm
<b>Weight</b>	16,5 kg	16,5 kg	17 kg	20 kg	20 kg	20 kg
<b>Noise Level</b>	40dB/34dB (Normal/Eco. Mode)	40dB/34dB (Normal/Eco. Mode)	39dB/35dB (Standard/Dual-lamp Eco. Mode)	40dB/35dB (Standard/Dual-lamp Eco. Mode)	40dB/35dB (Standard/Dual-lamp Eco. Mode)	40dB/35dB (Standard/Dual-lamp Eco. Mode)
<b>Lamp Life and Type</b>	2,000/2,500 Hours (Normal / Eco. Mode), 280W x2	2,000/2,500 Hours (Normal / Eco. Mode), 280W x2	2,500/3,500 Hours (Normal / Eco. Mode), UHP 280W x2	2,000/2,500 Hours (Normal / Eco. Mode) 350W x2	2,000/2,500 Hours (Normal / Eco. Mode) 350W x2	2,000/2,500 Hours (Normal / Eco. Mode) 350W x2
<b>Power</b>	Supply: AC 100-240V Consumption: 580W (Eco. Mode), 715W (Normal Mode), <0.5W (Eco Standby Mode)	Supply: AC 100-240V Consumption: 580W (Eco. Mode), 715W (Normal Mode), <0.5W (Eco Standby Mode)	Supply: AC 100-240V Consumption: 580W (Eco. Mode), 715W (Normal Mode), <0.5W (Eco Standby Mode)	Supply: AC 110V - 240V @ 50~60 Hz Consumption: 660 (Eco. Mode), 870W (Normal Mode), <0.5W (Standby Mode, Lan, RS232 Off)	Supply: AC 110V - 240V @ 50~60 Hz Consumption: 660 (Eco. Mode), 870W (Normal Mode), <0.5W (Standby Mode, Lan, RS232 Off)	Supply: AC 110V - 240V @ 50~60 Hz Consumption: 660 (Eco. Mode), 870W (Normal Mode), <0.5W (Standby Mode, Lan, RS232 Off)
<b>UPC</b>	814964 339256	814964 339270	813097 020109	814964 339294	814964 339300	814964 339287
<b>Warranty</b>	Large Venue	Large Venue	Large Venue	Large Venue	Large Venue	Large Venue

# D8800 & DU9000

## High resolution and high brightness projectors

Resolution: WUXGA

High brightness:  
up to 11000 ANSI  
Lumens

Contrast ratio up to  
5,000:1

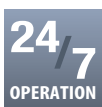
Lamp life up to 2,500  
hours



### *Our series for the most demanding usage scenarios*

These dual lamp projectors are intended for Pro AV rental, staging and large venue applications.

- **3G-SDI and HDBaseT** interface for high definition content.
- **Interchangeable lens** with **motorized focus** and **lens shift**, and also **exchangeable color wheels** fit to various installation scenarios.
- **Lens Position Memory (D8800)** will store up to **10 user defined lens positions** for focus, zoom and lens.
- **Embedded edge-blending & warping technology**, to ensure flexible usage in various environments.
- This series of projectors has been designed to offer **24/7 operation capacity**, to ensure your peace of mind, especially during important, prestigious events, where nothing should go going wrong.





# D8800 & DU9000 specification



**D8800**



**DU9000**

<b>Display Type</b>	Single 0.67" DLP Technology by Texas Instruments	Single 0.96" DLP Technology by Texas Instruments
<b>Brightness</b>	8000 ANSI Lumens	11000 ANSI Lumens
<b>Native Resolution</b>	WUXGA (1920 x 1200)	WUXGA (1920 x 1200)
<b>Supported Max. Resolution</b>	WUXGA (1920 x 1200) @60Hz	WUXGA (1920 x 1200) @60Hz
<b>Native Aspect Ratio</b>	16:10	16:10
<b>Contrast Ratio</b>	3,000:1	5,000:1
<b>Keystone Correction</b>	Vertical: +/-35°/Horizontal: +/-20°	Vertical: +/-35°, Horizontal: +/-20°
<b>Projection Lens</b>	6 optional lenses from 0.76:1 to 5.31-8.26:1 throw ratio range	5 optional lenses from 0.84-1.03:1 to 4.0-7.0:1 throw ratio range
<b>Zoom</b>	Motorized Zoom & Focus	Motorized Zoom & Focus
<b>Offset (Based on Full Image Height)</b>	Motorized Lens Shift	Motorized Lens Shift
<b>Lens Shift Range</b>	Vertical +50%; Horizontal +/-10%	Vertical +50%, -37.5%; Horizontal +/-15%
<b>Video Compatibility</b>	SDTV (480i, 576i) / EDTV (480p, 576p) / HDTV (720p, 1080i, 1080p), NTSC (M, 3.58/4.43 MHz), PAL (B,D,G,H,I,M,N) SECAM (B,D,G,K,K1,L)	SDTV (480i, 576i) / EDTV (480p, 576p) / HDTV (720p, 1080i, 1080p), NTSC (M, 3.58/4.43 MHz), PAL (B,D,G,H,I,M,N) SECAM (B,D,G,K,K1,L)
<b>I/O Connection Ports</b>	VGA-In, HDMI v1.3, DVI-D, 3G-SDI In, 3G-SDI Out, Component (5 BNC - RGBHV), Composite Video, S-Video Remote Jack (Wired Remote), 12v Trigger (3.5mm Mini-Jack), RJ45, RS-232	VGA-In, HDMI v1.4 (x2), RJ45 (HDBaseT/LAN), 3G-SDI In, 3G-SDI Out, Component (3 BNC - YPbPr), Component (3 RGB - YPbPr), 3D-Sync Out, 12v Trigger (3.5mm Mini-Jack x2), RS-232, USB A (Service)
<b>Dimensions (W x D x H)</b>	510 x 553 x 230mm	500 x 630 x 250mm
<b>Weight</b>	25 kg	38 kg
<b>Noise Level</b>	43dB/39dB (Normal/Eco. Mode)	45dB/ 40dB (Normal/Eco. Mode)
<b>Lamp Life and Type</b>	1,500/2,000 Hours (Normal / Eco. Mode) On/Off 2,000/2,500 Hours(Normal/Eco. Mode) Continue On. 2 X 400W	1,500/2,000 Hours (Normal / Eco. Mode)
<b>Power</b>	Supply: AC 100-240V Consumption: 530W (Eco. Mode), 990W (Normal Mode), <0.5W (Standby Mode)	Supply: AC 100-240V Consumption: 910 W (Eco. Mode), 1200W (Normal Mode), < 0.5W (Standby Mode w/o network)
<b>UPC</b>	814964 336309	813097020017
<b>Warranty</b>	Large Venue	Large Venue



# DU7090Z and DU8090Z specification



**DU7090Z**



**DU8090Z**

<b>Display Type</b>	Single 0.67" DLP Technology by Texas Instruments	Single 0.67" DLP Technology by Texas Instruments
<b>Brightness</b>	6000 ANSI Lumens	8000 ANSI Lumens
<b>Native Resolution</b>	WUXGA (1920 x 1200)	WUXGA (1920 x 1200)
<b>Supported Max. Resolution</b>	WUXGA (1920 x 1200) @60Hz	WUXGA (1920 x 1200) @60Hz
<b>Native Aspect Ratio</b>	16:10	16:10
<b>Contrast Ratio</b>	15,000:1	10,000:1
<b>Keystone Correction</b>	Vertical +/- 30°, Horizontal +/- 30°	Vertical +/- 30°
<b>Projection Lens</b>	5 optional lenses from 0.78:1 to 3.00-5.01:1 throw ratio range	8 optional lenses from 0.38:1 to 5.31-8.26:1 throw ratio range
<b>Zoom</b>	Manual Zoom & Focus	Motorized Zoom & Focus
<b>Offset (Based on Full Image Height)</b>	Manual Lens Shift	Motorized Lens Shift
<b>Lens Shift Range</b>	Vertical +55%, -15%; Horizontal +/-5%	Vertical +50%; Horizontal +/-10%
<b>Video Compatibility</b>	SDTV (480i, 576i) / EDTV (480p, 576p) / HDTV (720p, 1080i, 1080p), NTSC (M, 3.58/4.43 MHz), PAL (B,D,G,H,I,M,N) SECAM (B,D,G,K,K1,L)	SDTV (480i, 576i) / EDTV (480p, 576p) / HDTV (720p, 1080i, 1080p), NTSC (M, 3.58/4.43 MHz), PAL (B,D,G,H,I,M,N) SECAM (B,D,G,K,K1,L)
<b>I/O Connection Ports</b>	VGA-In, HDMI v1.4 (HDMIx1, HDMI/MHLx1), DVI-D, Component (5 BNC - RGBHV), Audio-In (Mini-Jack), Audio-In (RCA), VGA-Out (15pin D-Sub), Audio-Out (Mini-Jack), Audio-Out (RCA), Remote Jack (Wired Remote), 3D-Sync Out, 12v Trigger (3.5mm Mini-Jack), USB A (Power Only), RJ45 (HDBaseT/LAN), RS-232 (In and Out), USB B (Service)	VGA-In, HDMI v1.4 (x2), DVI-D, RJ45 (HDBaseT/LAN), 3G-SDI In, 3G-SDI Out, Component (5 BNC - RGBHV), VGA-Out (15pin D-Sub), Remote Jack (Wired Remote), 3D-Sync In, 3D-Sync Out, 12v Trigger (3.5mm Mini-Jack), RS-232 (In and Out), USB A (Service)
<b>Dimensions (W x D x H)</b>	517 x 470 x 202 mm	500 x 580 x 205mm (excluding the protruding part)
<b>Weight</b>	25 kg	28 kg
<b>Speakers</b>	10W x 2	No
<b>Noise Level</b>	33dB (Normal Mode)	40dB (Normal Mode)
<b>Lamp Life and Type</b>	Lamp free design. Laser light source last up to 20,000 hours	Lamp free design. Laser light source last up to 20,000 hours
<b>Power</b>	Supply: AC 100-240V, 50/60Hz Consumption: 530W (Eco. Mode), 650W (Normal Mode), <0.5W (Standby)	Supply: AC 100-240V, 50/60Hz Consumption: 675W (Eco. Mode), 850W (Normal Mode), <0.5W (Standby)
<b>UPC</b>	New model available from 2016 Q3	DU8090Z-BK: 813097021953 , DU8090Z-WH: 813097021786
<b>Warranty</b>	Large Venue	Large Venue

## D5000 Series Optional Manual Lenses



VL904G/LNS-5FX2



LNS-5STZ



LNS-5SZ1



LNS-5LZ1



LNS-5LZ2

Lens Name	Short-Throw	Short Throw Zoom	Standard	Middle-Throw	Long Throw
<b>Zoom</b>	Fixed Zoom	1.18x	1.25x	1.5x	1.67x
<b>F Number</b>	2.5	2.05-2.27	2.46-2.56	2.5-3.1	2.2-2.5
<b>Focal Length (f)</b>	11.46 mm	16.64 - 19.54 mm	22.8 - 28.5 mm	28.5 - 42.75 mm	44.5 - 74.19 mm
<b>Throw Ratio XGA</b>	0.81:1	1.14-1.34:1	1.60-2.00:1	2.00-3.00:1	3.11-5.18:1
<b>Throw Ratio WXGA</b>	0.82:1	1.15-1.36:1	1.62-2.03:1	2.03-3.05:1	3.15-5.26:1
<b>Throw Ratio 1080p</b>	0.78:1	1.10-1.30:1	1.54-1.93:1	1.93-2.89:1	3.00-5.01:1
<b>Throw Ratio WUXGA</b>	0.78:1	1.10-1.30:1	1.54-1.93:1	1.93-2.89:1	3.00-5.01:1
<b>Image Size and Projection Distance XGA</b>	47" - 303" (0.8 - 5 m)	37" - 388" (1 - 9 m)	37" - 300" (1.5 - 9.8 m)	33" - 492" (2 - 20 m)	29" - 316" (3 - 20 m)
<b>Image Size and Projection Distance WXGA</b>	46" - 283" (0.8 - 5 m)	35" - 361" (1 - 9 m)	35" - 300" (1.5 - 10.5 m)	31" - 457" (2 - 20 m)	27" - 294" (3 - 20 m)
<b>Image Size and Projection Distance 1080p</b>	47" - 290" (0.8 - 5 m)	35" - 369" (1 - 9 m)	36" - 300" (1.5 - 10.2 m)	32" - 468" (2 - 20 m)	28" - 301" (3 - 20 m)
<b>Image Size and Projection Distance WUXGA</b>	48" - 298" (0.8 - 5 m)	36" - 379" (1 - 9 m)	37" - 300" (1.5 - 9.6 m)	33" - 481" (2 - 20 m)	28" - 309" (3 - 20 m)
<b>Product Number</b>	5811120818-SVV	5811120054-SVV	5811116223-SU	5811116224-SU	5811120055-SVV

## D6000, D8000 Series Optional Motorised Lenses



D88-UST01\*



D88-UW01\*



D88-WF18501



D88-WZ01



D88-ST001



D88-SMLZ01



D88-LOZ101



D88-LOZ201

Lens Name	Ultra Short Throw	Ultra Wide Zoom	Wide Fix	Wide Zoom	Standard	Semi Long Zoom	Long Zoom 1	Long Zoom 2
<b>Zoom</b>	fixed zoom	1.25x	fixed zoom	1.41x	1.3x	1.65x	1.5x	1.55x
<b>F Number</b>	2.0	1.96 - 2.3	1.85	1.85-2.5	1.7-1.9	1.86-2.48	1.85-2.41	1.85-2.48
<b>Focal Length (f)</b>	5.64 mm	11.3 - 14.1 mm	11.6 mm	18.7 - 26.5 mm	26 - 34 mm	32.9 - 54.2 mm	52.8 - 79.1 mm	78.5 - 121.9 mm
<b>Throw Ratio XGA</b>	0.39:1	0.77-0.97:1	0.79:1	1.3-1.85:1	1.79-2.35:1	2.3-3.81:1	3.71-5.57:1	5.5-8.56:1
<b>Throw Ratio WXGA</b>	0.40:1	0.78-0.99:1	0.8:1	1.31-1.87:1	1.81-2.38:1	2.33-3.86:1	3.76-5.64:1	5.56-8.67:1
<b>Throw Ratio WUXGA</b>	0.38:1	0.75-0.93:1	0.76:1	1.25-1.79:1	1.73-2.27:1	2.22-3.67:1	3.58-5.38:1	5.31-8.26:1
<b>Image Size and Projection Distance XGA</b>	100" - 350" (0.83 - 2.68 m)	40" - 500" (0.61 - 10.16 m)	40" - 500" (0.62 - 8.31 m)	40" - 500" (1.03 - 19.14 m)	40" - 500" (1.42 - 24.28 m)	40" - 500" (1.83 - 39.42 m)	40" - 500" (2.94 - 57.69 m)	40" - 500" (4.31 - 89.48 m)
<b>Image Size and Projection Distance WXGA</b>	100" - 350" (0.89 - 2.87 m)	40" - 500" (0.65 - 10.91 m)	40" - 500" (0.67 - 8.92 m)	40" - 500" (1.11 - 20.58 m)	40" - 500" (1.53 - 26.11 m)	40" - 500" (1.97 - 42.35 m)	40" - 500" (3.17 - 61.97 m)	40" - 500" (4.65 - 96.13 m)
<b>Image Size and Projection Distance WUXGA</b>	100" - 350" (0.85 - 2.74 m)	40" - 500" (0.62 - 10.36 m)	40" - 500" (0.64 - 8.50 m)	40" - 500" (1.05 - 19.59 m)	40" - 500" (1.45 - 24.85 m)	40" - 500" (1.87 - 40.33 m)	40" - 500" (3.01 - 59.02 m)	40" - 500" (4.42 - 91.54 m)
<b>Product Number</b>	3797855700-SVK	3797804200-SVK	3797745100-SVK	3797745200-SVK	3797744200-SVK	3797745000-SVK	3797745400-SVK	3797744900-SVK

\*not compatible with D8800

## D5000, D6000, D8000, DU9000 Lamps



Lamp



360 Tilt Lamp



Lamp



Lamp



Lamp



Lamp

<b>Description</b>	D5000 Series	D5000 Series	DU6675, DW6035, DX6535	DX6831, DW6851, DU6871	D8800	DU9000
<b>Power</b>	370W	370W	280W	350W	400W	465 W
<b>Product Number</b>	5811118452-SVV	5811118482-SVV	5811100818-S	3797802500-SVK	3797772800-SVK	3797818200-SVK

## DU9000 Optional Motorized Lenses



D98-0810



D98-1518



D98-1824



D98-2440



D98-4070

Lens Name	Ultra Wide Zoom	Short Throw	Standard	Long Throw	Ultra Long Throw
<b>Zoom</b>	1.22x	1.19x	1.3x	1.67x	1.7x
<b>F Number</b>	1.8 - 1.95	2.5 - 2.76	2.17 - 2.46	2.1 - 2.7	2.2 - 2.57
<b>Focal Length (f)</b>	17.95 - 21.93mm	33.15 - 39.81mm	39 - 50.7mm	50.4 - 80.4mm	83.93 - 146.85mm
<b>Throw Ratio WUXGA</b>	0.84-1.03:1	1.56-1.86:1	1.85-2.41:1	2.4-4.0:1	4.0-7.0:1
<b>Image Size and Projection Distance WUXGA</b>	68" - 217" (1.5 - 4 m)	50" - 206" (2 - 7 m)	49" - 224" (2.5 - 9 m)	47" - 230" (4 - 12 m)	50" - 300" ( 6.9 - 25.5 m )
<b>Product Number</b>	3797805500-SVK	3797805300-SVK	3797805200-SVK	3797805400-SVK	3797858100-SB

## Accessories

See how you can adjust Vivitek projectors to meet your individual needs.

### Qumi Battery Pack

UPC: 3534213600



### Wall Mount Bracket

P/N number: 3900228200 (Wall-mount Bracket - D755WT/DH758UST)

P/N number: 3900228100 (Wall-mount Bracket - D795WT)



### QW-WiFi2.0 WiFi USB Dongle

Product Compatibility: DX3351, DW3321, Q7 Plus, Q7 Lite, Q7 and Q5.

UPC Code: 5040463200



### 3D Glasses

UPC Code: 3534257700



# Home Cinema Projectors

True cinema for your home

Resolutions: 1080p

Brightness up to 3000  
ANSI Lumens

Contrast ratio up to  
50,000:1

Lamp life up to 10,000  
hours



*How about turning your living room into a movie theatre for the evening?*

**The Vivitek Home Cinema projectors will take home movie watching to a whole new level:**

- Admire even the most tiny details shown in films thanks to a **1080p resolution** and up to **50,000:1 contrast ratio**.
- Enjoy a fluid and uninterrupted video stream thanks to **VividMotion**, which creates a fluid and flawless video stream by inserting an interim frame between the real frame of the source (H1188).



# Home Cinema Projectors specification



**H1060**



**H1186**



**H1188**

<b>Display Type</b>	Single 0.65" DLP Technology by Texas Instruments	Single 0.65" DLP Technology by Texas Instruments	Single 0.65" DLP Technology by Texas Instruments
<b>Brightness</b>	3000 ANSI Lumens	2000 ANSI Lumens	2000 ANSI Lumens
<b>Native Resolution</b>	1080p (1920 x 1080)	1080p (1920 x 1080)	1080p (1920 x 1080)
<b>Supported Max. Resolution</b>	WUXGA (1920 x 1200) @60Hz	WUXGA (1920 x 1200) @60Hz	WUXGA (1920 x 1200) @60Hz
<b>Native Aspect Ratio</b>	16:9	16:9	16:9
<b>Contrast Ratio</b>	15,000:1	50,000:1	50,000:1
<b>Keystone Correction</b>	Vertical +/-40°	Vertical +/- 40°	Vertical +/- 40°
<b>Projection Lens</b>	F = 2.59 - 2.91, f = 16.87 - 21.87 mm	F = 2.418 - 2.97, f = 20.7 - 31.05 mm	F = 2.418 - 2.97, f = 20.7 - 31.05 mm
<b>Zoom Ratio</b>	1.3x	1.5x	1.5x
<b>Throw Ratio</b>	1.14 - 1.5:1	1.39 - 2.09:1	1.39 - 2.09:1
<b>Image Size (Diagonal)</b>	30" - 317"	25.9" - 324.9"	25.9" - 324.9"
<b>Projection Distance</b>	1 - 8 m	1.2 - 10m	1.2 - 10m
<b>Offset (Based on Full Image Height)</b>	115%	115%	115%
<b>Lens Shift Range</b>	NA	Vertical +9%, -5%	Vertical +9%, -5%
<b>Video Compatibility</b>	SDTV (480i, 576i) / EDTV (480p, 576p) / HDTV (720p, 1080i, 1080p), NTSC (M, 3.58/4.43 MHz), PAL (B,D,G,H,I,M,N) SECAM (B,D,G,K,K1,L)	SDTV (480i, 576i) / EDTV (480p, 576p) / HDTV (720p, 1080i, 1080p), NTSC (M, 3.58/4.43 MHz), PAL (B,D,G,H,I,M,N) SECAM (B,D,G,K,K1,L)	SDTV (480i, 576i) / EDTV (480p, 576p) / HDTV (720p, 1080i, 1080p), NTSC (M, 3.58/4.43 MHz), PAL (B,D,G,H,I,M,N) SECAM (B,D,G,K,K1,L)
<b>I/O Connection Ports</b>	VGA-In, HDMI v1.4 (HDMIx1, HDMI/MHLx1), Audio-In (Mini-Jack), Audio-Out (Mini-Jack), 3D-Sync Out, 12v Trigger (3.5mm Mini-Jack), USB miniB (Service)	VGA-In, HDMI v1.4 (HDMIx1, HDMI/MHLx1), Component (3 RGB - YPbPr), Composite Video, S-Video, Audio-In (Mini-Jack), Audio-In (RCA), Audio-Out (Mini-Jack), 3D-Sync Out, 12v Trigger (3.5mm Mini-Jack), USB A (Power Only), RS-232, USB miniB (Service)	VGA-In, HDMI v1.4 (HDMIx1, HDMI/MHLx1), Component (3 RGB - YPbPr), Composite Video, Audio-In (RCA), 3D-Sync Out, 12v Trigger (3.5mm Mini-Jack), USB A (Power Only), RS-232, USB miniB (Service)
<b>Dimensions (W x D x H)</b>	274.6 x 212 x 100 mm	285 x 261 x 121.8 mm	285 x 261 x 121.8 mm
<b>Weight</b>	2,3 kg	3,15 kg	3,15 kg
<b>Speakers</b>	2W	10W	10W
<b>Noise Level</b>	34dB/31dB (Normal/Eco. Mode)	33dB/29dB (Normal/Eco. Mode)	34dB/29db (Normal/Eco. Mode)
<b>Lamp Life and Type</b>	5,000/6,000/10,000 Hours (Normal/Eco./Dynamic Eco. Mode), 190W/160W	3,500/5,000/7,000 Hours (Normal/Eco./Dynamic Eco. Mode), 240W/190W	3,000/4,000/5,000 Hours (Normal/Eco./Dynamic Eco. Mode), 260W/205W
<b>Power</b>	Supply: AC 100-240V, 50/60Hz. Consumption: 200W (Eco. Mode), 240W (Normal Mode), <0.5W (Standby)	Supply: AC 100-240V, 50/60Hz. Consumption: 240W (Eco. Mode), 290W (Normal Mode), <0.5W (Standby)	Supply: AC 100-240V, 50/60Hz. Consumption: 240W (Eco. Mode), 290W (Normal Mode), <0.5W (Standby)
<b>UPC</b>	813097021625	813097020505	813097020529
<b>Warranty</b>	Standard	Standard	Standard



**Vivitek EMEA**  
Zandsteen 15  
2132 MZ Hoofddorp  
The Netherlands  
Tel: +31 20 655 0960  
Fax: +31 20 655 0999  
E-Mail: [info@vivitek.eu](mailto:info@vivitek.eu)  
[www.vivitek.eu](http://www.vivitek.eu)

2016/1H/English/v2

©Copyright 2016 Vivitek. Vivitek is a registered trademark of Delta Electronics, Inc. DLP® and the DLP logo are registered trademarks of Texas Instruments. All specifications are subject to change at any time.

A brand of  **DELTA**